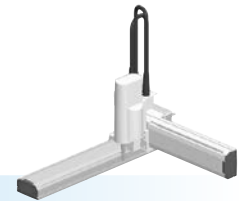






# SXYx 3 axes / ZS

● Arm type ● Whipover ● Z-axis shaft vertical type



## Ordering method

**SXYx - S** [ ] [ ] [ ] [ ] **15** [ ] **RCX340-3** [ ] [ ] [ ] [ ] [ ] [ ] [ ] [ ] [ ] [ ] [ ] [ ] [ ] [ ] [ ]

Model	Cable	Combination	X-axis stroke	Y-axis stroke	ZR-axis	Z-axis stroke	Cable	Controller / Number of controllable axes	Safety standard	Option A (OP.A)	Option B (OP.B)	Option C (OP.C)	Option D (OP.D)	Option E (OP.E)	Absolute battery
A1			15 to 85cm	15 to 65cm	ZS12		3L: 3.5m								
A2					ZS6		5L: 5m								
A3							10L: 10m								
A4															

Specify various controller setting items. RCX340 ▶ **P.636**

## Specification

	X-axis	Y-axis	Z-axis: ZS12	Z-axis: ZS6
Axis construction <sup>Note 1</sup>	F14H	F14	-	
AC servo motor output (W)	200	100	60	
Repeatability <sup>Note 2</sup> (mm)	+/-0.01	+/-0.01	+/-0.02	
Drive system	Ball screw φ15	Ball screw φ15	Ball screw φ12	
Ball screw lead <sup>Note 3</sup> (Deceleration ratio) (mm)	20	20	12	6
Maximum speed <sup>Note 4</sup> (mm/sec)	1200	1200	1000	500
Moving range (mm)	150 to 850	150 to 650	150	
Robot cable length (m)	Standard: 3.5 Option: 5,10			

Note 1. Use caution that the flame machining (installation holes, tap holes) differs from single-axis robots.  
 Note 2. Positioning repeatability in one direction.  
 Note 3. Leads not listed in the catalog are also available. Contact us for details.  
 Note 4. When the X-axis stroke is longer than 750mm, resonance of the ball screw may occur depending on the operation conditions (critical speed). In this case, reduce the speed setting on the program by referring to the maximum speeds shown in the table below.

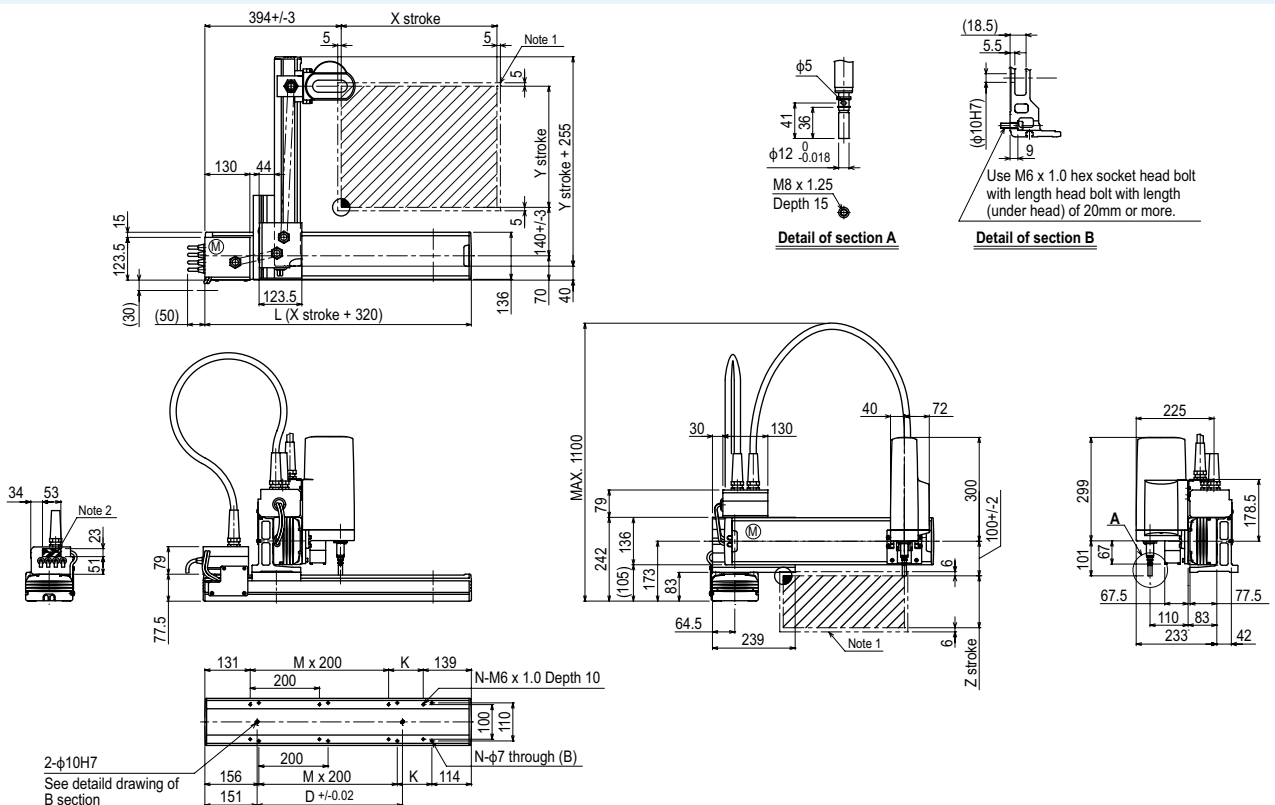
## Maximum payload (kg)

Y stroke (mm)	ZS12	ZS6
150 to 650	3	5

## Controller

Controller	Operation method
RCX340	Programming / I/O point trace / Remote command / Operation using RS-232C communication

## SXYx 3 axes / ZS (A1)



X stroke	150	250	350	450	550	650	750	850
L	470	570	670	770	870	970	1070	1170
K	200	100	200	100	200	100	200	100
D	240	240	420	420	600	600	780	960
M	0	1	1	2	2	3	3	4
N	4	6	6	8	8	10	10	12
Y stroke	150	250	350	450	550	650		
Z stroke	150							
Maximum speed for each stroke (mm/sec) <sup>Note 3</sup>	X-axis		1200				960	780
Speed setting			-				80%	65%

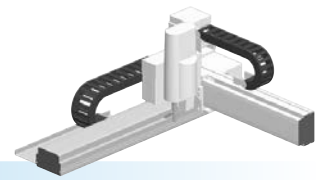
Note 1. The moving range when returning to origin and the stop position when stopping by the mechanical stopper.  
 Note 2. The shaded position indicates a user cable extraction point.

Note 3. When the X-axis stroke is longer than 750mm, resonance of the ball screw may occur depending on the operation conditions (critical speed). In this case, reduce the speed setting on the program by referring to the maximum speeds shown in the table at the left.

Linear conveyor modules  
 Single-axis robots  
 Linear conveyor modules  
 SCARA robots  
 Single-axis robots  
 Single-axis robots  
 Linear motor single-axis robots  
 Single-axis robots  
 Compact single-axis robots  
 Cartesian robots  
 Pick & place robots  
 CLEAN CONTROLLER INFORMATION  
 Arm type  
 Gantry type  
 Moving arm type  
 Pole type  
 XZ type

# SXYBx 3 axes / ZS

● Arm type ● Cable carrier ● Z-axis shaft vertical type



## Ordering method

**SXYBx - C**       **ZS - 15**   **RCX340-3**                      

Model	Cable	Combination	X-axis stroke	Y-axis stroke	ZR-axis	Z-axis stroke	Cable	Controller / Number of controllable axes	Safety standard	Option A (OP.A)	Option B (OP.B)	Option C (OP.C)	Option D (OP.D)	Option E (OP.E)	Absolute battery
A1		A1	15 to 305cm	15 to 55cm	ZS12		3L: 3.5m 5L: 5m 10L: 10m								
A2		A2			ZS6										
A3		A3													
A4		A4													

Specify various controller setting items. RCX340 ▶ **P.636**

## Specification

	X-axis	Y-axis	Z-axis: ZS12	Z-axis: ZS6
Axis construction <sup>Note 1</sup>	B14H	B14	-	
AC servo motor output (W)	200	100	60	
Repeatability <sup>Note 2</sup> (mm)	+/-0.04	+/-0.04	+/-0.02	
Drive system	Timing belt	Timing belt	Ball screw φ12	
Ball screw lead <sup>Note 3</sup> (Deceleration ratio) (mm)	Equivalent to lead 25	Equivalent to lead 25	12	6
Maximum speed (mm/sec)	1875	1875	1000	500
Moving range (mm)	150 to 3050	150 to 550	150	
Robot cable length (m)	Standard: 3.5 Option: 5,10			

Note 1. Use caution that the flame machining (installation holes, tap holes) differs from single-axis robots.  
 Note 2. Positioning repeatability in one direction.  
 Note 3. Leads not listed in the catalog are also available. Contact us for details.

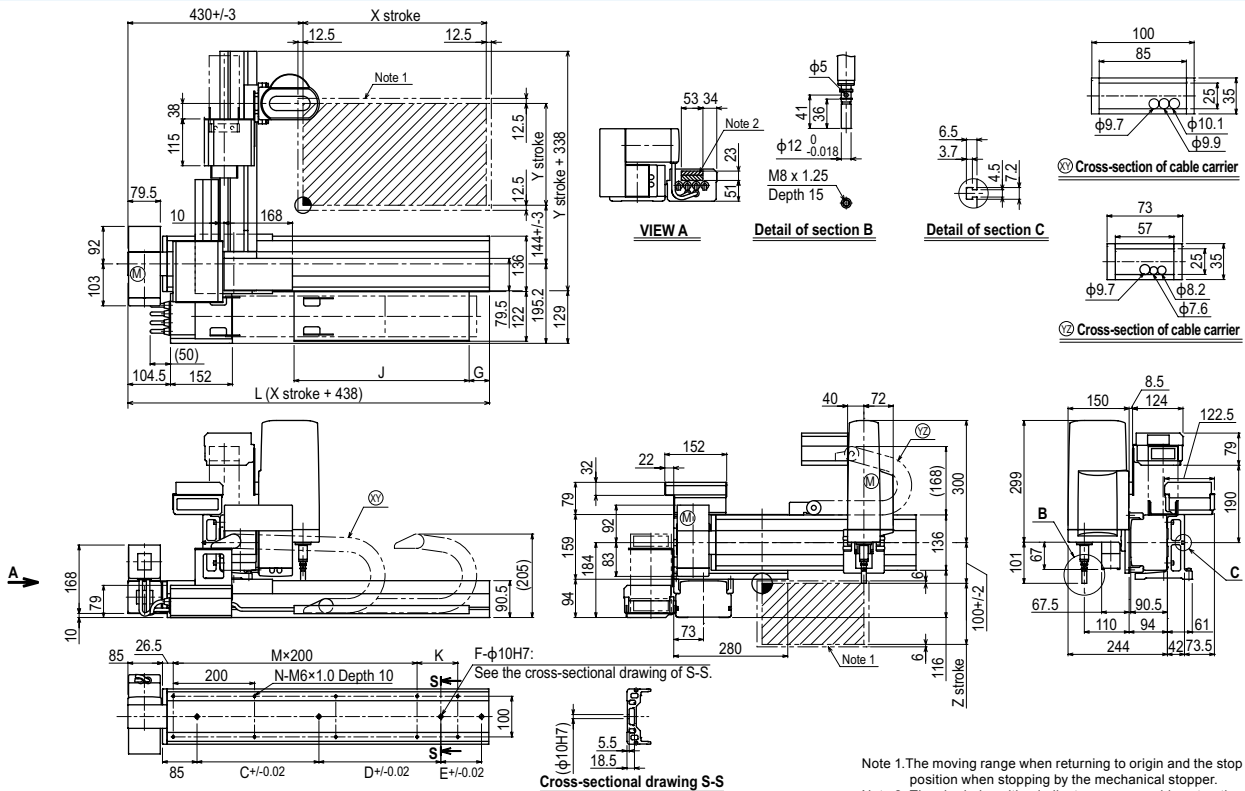
## Maximum payload (kg)

Y stroke (mm)	ZS12	ZS6
150	3	5
250	3	5
350	3	5
450	3	4
550	3	3

## Controller

Controller	Operation method
RCX340	Programming / I/O point trace / Remote command / Operation using RS-232C communication

## SXYBx 3 axes / ZS A1



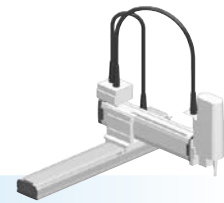
Note 1. The moving range when returning to origin and the stop position when stopping by the mechanical stopper.  
 Note 2. The shaded position indicates an user cable extraction port.

X stroke	150	250	350	450	550	650	750	850	950	1050	1150	1250	1350	1450	1550	1650	1750	1850	1950	2050	2150	2250	2350	2450	2550	2650	2750	2850	2950	3050						
L	588	688	788	888	988	1088	1188	1288	1388	1488	1588	1688	1788	1888	1988	2088	2188	2288	2388	2488	2588	2688	2788	2888	2988	3088	3188	3288	3388	3488						
K	200	100	200	100	200	100	200	100	200	100	200	100	200	100	200	100	200	100	200	100	200	100	200	100	200	100	200	100	200	100						
C	240	420	600	600	780	780	960	960	1140	1140	1140	1140	1140	1140	1140	1140	1140	1140	1140	1140	1140	1140	1140	1140	1140	1140	1140	1140	1140	1140						
D	-	-	-	-	-	-	-	-	-	-	240	240	240	420	600	600	780	780	960	960	1140	1140	1140	1140	1140	1140	1140	1140	1140	1140						
E	-	-	-	-	-	-	-	-	-	-	-	-	-	-	-	-	-	-	-	-	-	-	240	240	420	420	600	600	780	960						
F	2	2	2	2	2	2	2	2	2	2	3	3	3	3	3	3	3	3	3	3	3	3	4	4	4	4	4	4	4	4						
M	1	2	2	3	3	4	4	5	5	6	6	7	7	8	8	9	9	10	10	11	11	12	12	13	13	14	14	15	15	16						
N	6	8	8	10	10	12	12	14	14	16	16	18	18	20	20	22	22	24	24	26	26	28	28	30	30	32	32	34	34	36						
G	0	50	0	50	0	50	0	50	0	50	0	50	0	50	0	50	0	50	0	50	0	50	0	50	0	50	0	50	0	50						
J	330	330	430	430	530	530	630	630	730	730	830	830	930	930	1030	1030	1130	1130	1230	1230	1330	1330	1430	1430	1530	1530	1630	1630	1730	1730						
Y stroke	150	250	350	450	550																															
Z stroke	150																																			

Linear conveyor modules  
 LCMR200  
 Single-axis robots  
 GX  
 Linear conveyor modules  
 LCM100  
 SCARA robots  
 YK-X  
 Single-axis robots  
 Robomity  
 Linear motor single-axis robots  
 PHASER  
 Single-axis robots  
 FLIP-X  
 Compact single-axis robots  
 TRANSERO  
 Cartesian robots  
 XX-X  
 Pick & place robots  
 YP-X  
 CLEAN  
 CONTROLLER INFORMATION  
 Arm type  
 Gantry type  
 Moving arm type  
 Pole type  
 XZ type

# SXYx 3 axes / ZS

- Moving arm type
- Whipover
- Z-axis shaft vertical type



## Ordering method

**SXYx - S** [ ] [ ] [ ] [ ] **15** [ ] **RCX340-3** [ ] [ ] [ ] [ ] [ ] [ ] [ ] [ ] [ ] [ ]

Model	Cable	Combination	X-axis stroke <sup>Note 1</sup>	Y-axis stroke <sup>Note 1</sup>	ZR-axis	Z-axis stroke	Cable	Controller / Number of controllable axes	Safety standard	Option A (OP.A)	Option B (OP.B)	Option C (OP.C)	Option D (OP.D)	Option E (OP.E)	Absolute battery
M1	M1	M3	15 to 85cm	15 to 35cm	ZS12 ZS6		3L: 3.5m 5L: 5m 10L: 10m								

Specify various controller setting items. RCX340 ▶ **P.636**

Note 1. The total of the X and Y strokes should be 1000mm or less.

## Specification

	X-axis	Y-axis	Z-axis: ZS12	Z-axis: ZS6
Axis construction <sup>Note 1</sup>	F14H	F14		-
AC servo motor output (W)	200	100		60
Repeatability <sup>Note 2</sup> (mm)	+/-0.01	+/-0.01		+/-0.02
Drive system	Ball screw φ15	Ball screw φ15		Ball screw φ12
Ball screw lead <sup>Note 3</sup> (Deceleration ratio) (mm)	20	20	12	6
Maximum speed <sup>Note 4</sup> (mm/sec)	1200	1200	1000	500
Moving range (mm)	150 to 850	150 to 350		150
Robot cable length (m)	Standard: 3.5 Option: 5,10			

Note 1. Use caution that the flame machining (installation holes, tap holes) differs from single-axis robots'.

Note 2. Positioning repeatability in one direction.

Note 3. Leads not listed in the catalog are also available. Contact us for details.

Note 4. When the X-axis stroke is longer than 750mm, resonance of the ball screw may occur depending on the operation conditions (critical speed). In this case, reduce the speed setting on the program by referring to the maximum speeds shown in the table below.

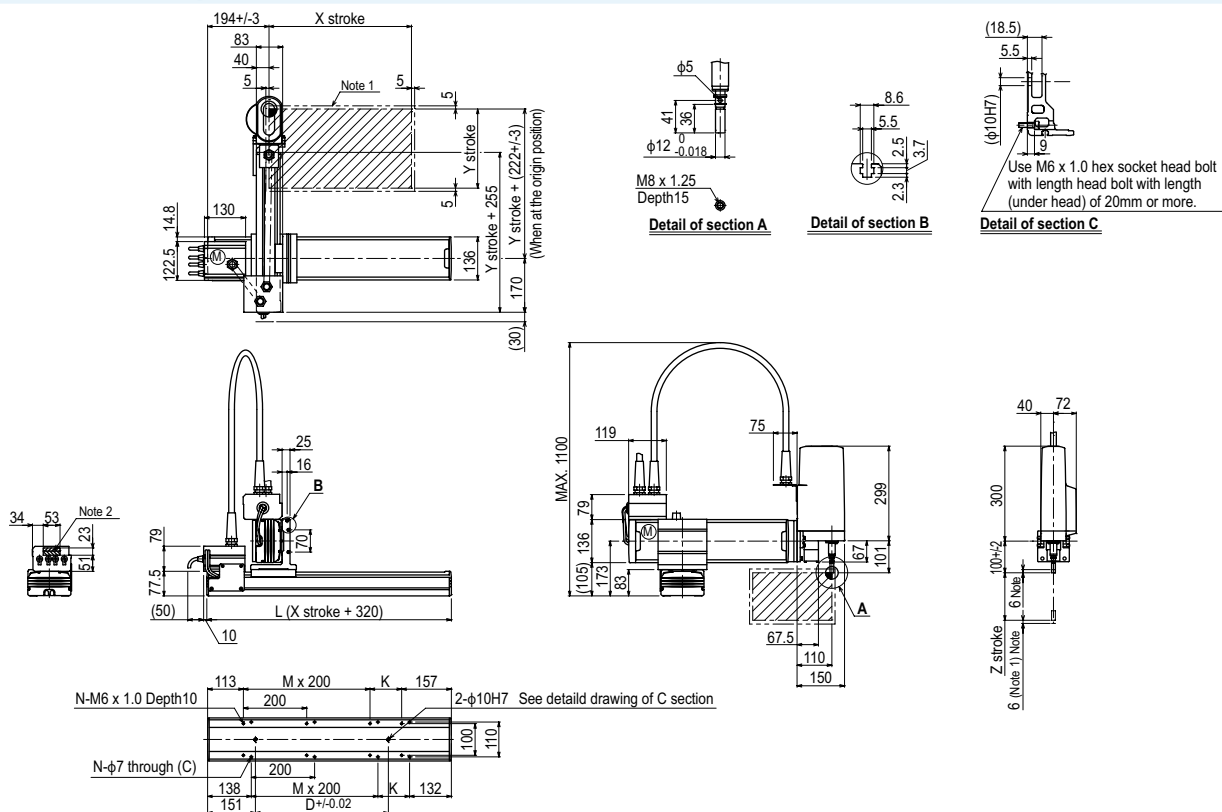
## Maximum payload (kg)

Y stroke (mm)	ZS12	ZS6
150 to 350	3	5

## Controller

Controller	Operation method
RCX340	Programming / I/O point trace / Remote command / Operation using RS-232C communication

## SXYx 3 axes / ZS M1



X stroke <sup>Note 3</sup>	150	250	350	450	550	650	750	850
	L	470	570	670	770	870	970	1070
K	200	100	200	100	200	100	200	100
D	240	240	420	420	600	600	780	960
M	0	1	1	2	2	3	3	4
N	4	6	6	8	8	10	10	12
Y stroke <sup>Note 3</sup>	150	250	350					
Z stroke	150							
Maximum speed for each stroke (mm/sec) <sup>Note 4</sup>	X-axis	1200			960		780	
	Speed setting	-			80%		65%	

Note 1. The moving range when returning to origin and the stop position when stopping by the mechanical stopper.

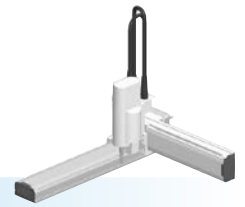
Note 2. The shaded position indicates a user cable extraction port.

Note 3. The total of the X and Y strokes should be 1000mm or less.

Note 4. When the X-axis stroke is longer than 750mm, resonance of the ball screw may occur depending on the operation conditions (critical speed). In this case, reduce the speed setting on the program by referring to the maximum speeds shown in the table at the left.

- Linear conveyor modules
- Single-axis robots
- Linear conveyor modules
- SCARA robots
- Single-axis robots
- Linear motor single-axis robots
- Single-axis robots
- Compact single-axis robots
- Cartesian robots
- Pick & place robots
- CLEAN
- CONTROLLER INFORMATION
- Arm type
- Gantry type
- Moving arm type
- Pole type
- XZ type





### Ordering method

**SXYx - S** [ ] [ ] [ ] [ ] **15** [ ] **RCX340-4** [ ] [ ] [ ] [ ] [ ] [ ] [ ] [ ] [ ] [ ] [ ]

Model	Cable	Combination	X-axis stroke	Y-axis stroke	ZR-axis	Z-axis stroke	Cable	Controller / Number of controllable axes	Safety standard	Option A (OP.A)	Option B (OP.B)	Option C (OP.C)	Option D (OP.D)	Option E (OP.E)	Absolute battery
A1			15 to 85cm	15 to 65cm	ZRS12		3L: 3.5m 5L: 5m 10L: 10m								
A2					ZRS6										
A3															
A4															

Specify various controller setting items. RCX340 ▶ **P.636**

### Specification

	X-axis	Y-axis	Z-axis: ZRS12	Z-axis: ZRS6	R-axis
Axis construction <sup>Note 1</sup>	F14H	F14	-	-	-
AC servo motor output (W)	200	100	60		100
Repeatability <sup>Note 2</sup> (XYZ: mm) (R: °)	+/-0.01	+/-0.01	+/-0.02		+/-0.005
Drive system	Ball screw φ15	Ball screw φ15	Ball screw φ12		Harmonic gear
Ball screw lead <sup>Note 3</sup> (Deceleration ratio) (mm)	20	20	12	6	(1/50)
Maximum speed <sup>Note 4</sup> (XYZ: mm/sec) (R: °/sec)	1200	1200	1000	500	1020
Moving range (XYZ: mm) (R: °)	150 to 850	150 to 650	150		360
Robot cable length (m)	Standard: 3.5 Option: 5,10				

Note 1. Use caution that the flame machining (installation holes, tap holes) differs from single-axis robots.  
 Note 2. Positioning repeatability in one direction.  
 Note 3. Leads not listed in the catalog are also available. Contact us for details.  
 Note 4. When the X-axis stroke is longer than 750mm, resonance of the ball screw may occur depending on the operation conditions (critical speed). In this case, reduce the speed setting on the program by referring to the maximum speeds shown in the table below.

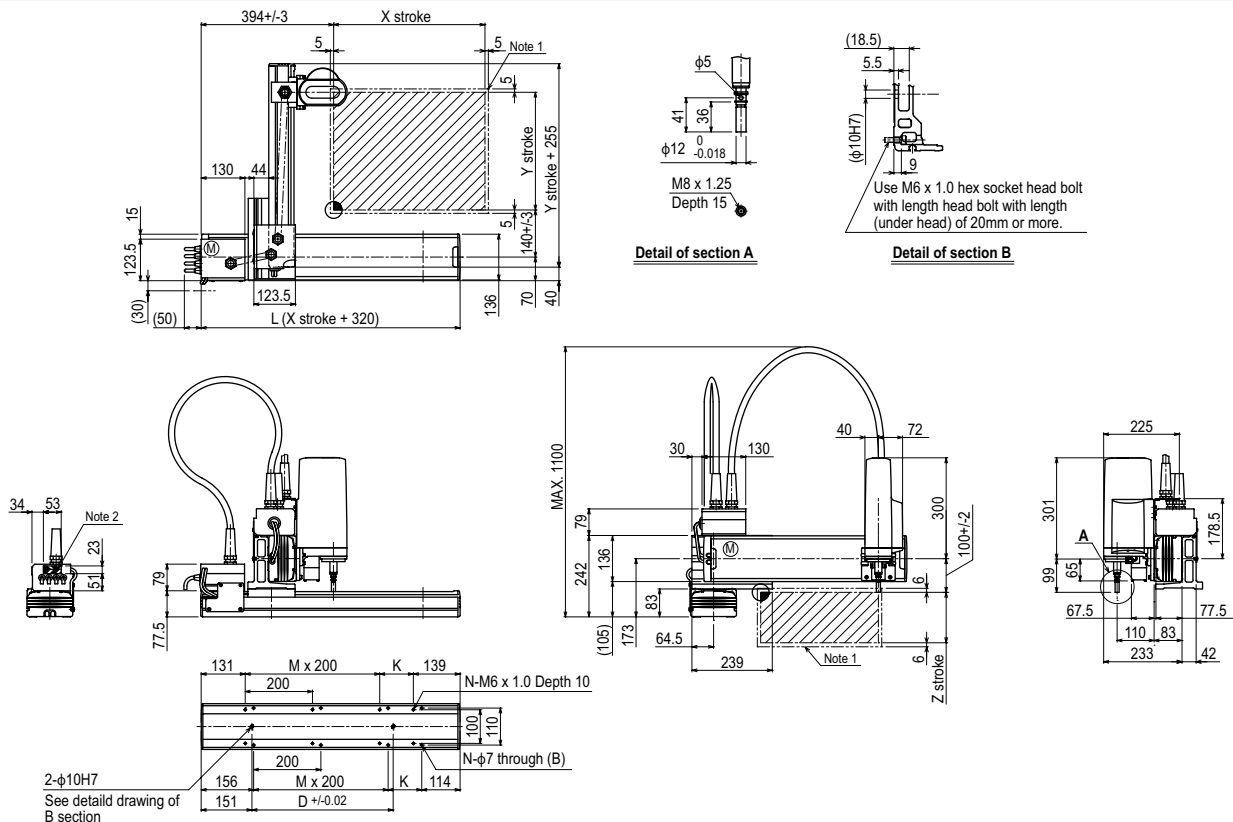
### Maximum payload (kg)

Y stroke (mm)	ZRS12	ZRS6
150	3	5
250	3	5
350	3	5
450	3	5
550	3	5
650	3	4

### Controller

Controller	Operation method
RCX340	Programming / I/O point trace / Remote command / Operation using RS-232C communication

### SXYx 4 axes / ZRS A1



X stroke	150 250 350 450 550 650 750 850								
	L	470	570	670	770	870	970	1070	1170
K	200	100	200	100	200	100	200	100	
D	240	240	420	420	600	600	780	960	
M	0	1	1	2	2	3	3	4	
N	4	6	6	8	8	10	10	12	
Y stroke	150	250	350	450	550	650			
Z stroke	150								
Maximum speed for each stroke (mm/sec) <sup>Note 3</sup>	X-axis	1200					960	780	
	Speed setting	-					80%	65%	

Note 1. The moving range when returning to origin and the stop position when stopping by the mechanical stopper.  
 Note 2. The shaded position indicates a user cable extraction port.  
 Note 3. When the X-axis stroke is longer than 750mm, resonance of the ball screw may occur depending on the operation conditions (critical speed). In this case, reduce the speed setting on the program by referring to the maximum speeds shown in the table at the left.

