

GF14XL

● Origin on the non-motor side is selectable

Note. If you need an installation posture other than the horizontal installation, please contact us.

Ordering method

GF14XL - S H - 20

Model	Model S: Straight model	Installation direction H: Horizontal installation	Lead designation	Cable entry location No entry: Standard (S) U: From the top R: From the right L: From the left	Origin position change None: Standard Z: Non-motor side	Frame No entry: Standard Spot facing T: Tapping	Grease type None: Standard GC: Clean	Stroke 750 to 2000 (50mm pitch)	Cable length 3L: 3.5m 5L: 5m 10L: 10m 3K/5K/10K (Flexible cable)
-------	-------------------------	---	------------------	--	---	--	--	------------------------------------	--

TSX	SR1-X	RDV-X	RBR1
Positioner ^{Note 2} TSX: TS-X	Controller 10: 200W	Driver 2: AC200V	Regenerative unit
Driver: Power supply voltage Power capacity 110: 100V/200W 210: 200V/200W	Driver: Power capacity 10: 200W	Driver: Power supply voltage 2: AC200V	Driver: Power capacity 20: 600W or less
LCD monitor No entry: None L: With LCD	Usable for CE No entry: Standard E: CE marking		
I/O selection NP: NPN PN: PNP CC: CC-Link DN: DeviceNet™ EP: EtherNet/IP™ PT: PROFINET GW: No I/O board ^{Note 3}	I/O selection N: NPN P: PNP CC: CC-Link DN: DeviceNet™ PB: PROFIBUS		
Battery B: With battery (Absolute) N: None (Incremental)	Battery B: With battery (Absolute) N: None (Incremental)		

Note 1. The robot cable is standard cable (3L/5L/10L), but can be changed to flexible cable. See P.692 for details on robot cable.
Note 2. See P.600 for DIN rail mounting bracket.
Note 3. Select this selection when using the gateway function.

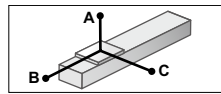
- [Cautions after purchase]
- When changing the origin position, contact us since the adjustment is needed.
 - When changing the cable entry location, contact us since necessary parts may vary depending on the cable entry location.
 - Do not install the robot with the horizontal installation specifications in a direction other than the horizontal direction.

Specifications

AC servo motor output (W)	200
Repeatability ^{Note 1} (mm)	+/-0.01
Deceleration mechanism	Ball screw φ15
Ball screw lead (mm)	20
Maximum speed (mm/sec)	1200
Maximum payload (kg)	45
Rated thrust (N)	170
Stroke (mm)	750 to 2000 (50mm pitch)
Overall length (mm)	Stroke+561
Maximum dimensions of cross section of main unit (mm)	W140×H91.5
Cable length (m)	Standard: 3.5 / Option: 5.10
Linear guide type	4 rows of circular arc grooves × 2 rail
Position detector	Resolvers ^{Note 2}
Resolution (Pulse/rotation)	20480

Note 1. Positioning repeatability in one direction.
Note 2. Position detectors (resolvers) are common to incremental and absolute specifications. If the controller has a backup function then it will be absolute specifications.

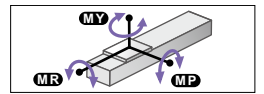
Allowable overhang^{Note}



Horizontal installation (Unit: mm)			
	A	B	C
10kg	3550	1340	1210
20kg	2075	685	633
45kg	1280	326	308

Note. Distance from center of slider top to center of gravity of object being carried at a guide service life of 10,000 km.
Note. Service life is calculated for 1000mm stroke models.

Static loading moment

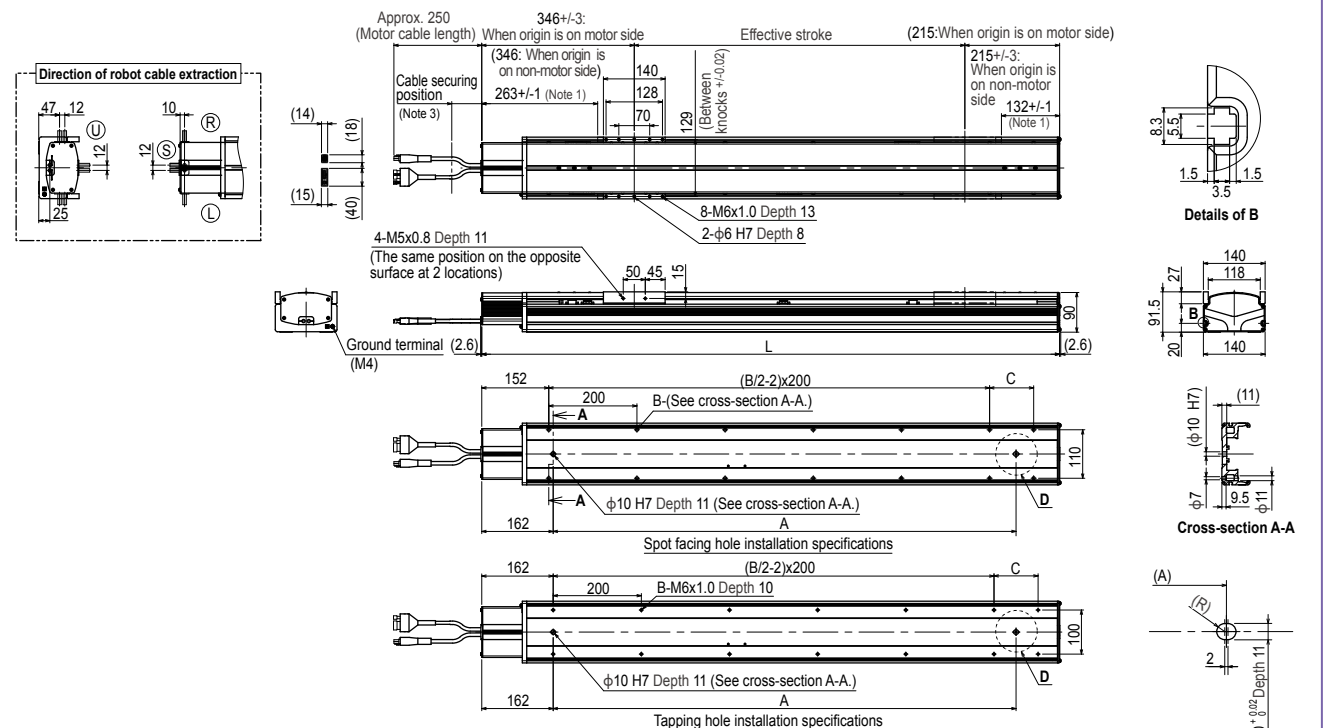


(Unit: N·m)		
MY	MP	MR
551	552	485

Controller

Controller	Operation method
SR1-X10 RCX320 RCX340	Programming / I/O point trace / Remote command / Operation using RS-232C communication
TS-X110 TS-X210	I/O point trace / Remote command
RDV-X220-RBR1	Pulse train control

GF14XL



Note 1. Stop positions are determined by the mechanical stoppers at both ends.
Note 2. When changing the return-to-origin direction, the adjustment is needed. (The standard is the origin on the motor side.)
Note 3. Secure the cable with a tie-band 100mm or less from unit's end face to prevent the cable from being subjected to excessive loads.
Note 4. The cable's minimum bend radius is R30.
Note 5. The length under head of the hexagonal socket head bolts (M6 x 1.0) that are used to install the main body with the spot facing hole installation specifications is 20mm or more. It is recommended that the length under head of the hexagonal socket head bolts (M6 x 1.0) that are used to install the main body with the tapping hole installation specifications is the thickness of the installation base + 10mm or less.

Effective stroke	750	800	850	900	950	1000	1050	1100	1150	1200	1250	1300	1350	1400	1450	1500	1550	1600	1650	1700	1750	1800	1850	1900	1950	2000
L	1311	1361	1411	1461	1511	1561	1611	1661	1711	1761	1811	1861	1911	1961	2011	2061	2111	2161	2211	2261	2311	2361	2411	2461	2511	2561
A	1050	1100	1150	1200	1250	1300	1350	1400	1450	1500	1550	1600	1650	1700	1750	1800	1850	1900	1950	2000	2050	2100	2150	2200	2250	2300
B	14	14	14	16	16	16	16	18	18	18	18	20	20	20	20	22	22	22	22	24	24	24	24	26	26	26
C	100	150	200	50	100	150	200	50	100	150	200	50	100	150	200	50	100	150	200	50	100	150	200	50	100	150
Weight (kg)	22.5	23.2	23.8	24.5	25.2	25.9	26.5	27.2	27.9	28.6	29.2	29.9	30.6	31.3	31.9	32.6	33.3	33.9	34.6	35.3	36.0	36.6	37.3	38.0	38.7	39.3

GF17XL

● Origin on the non-motor side is selectable

Note. If you need an installation posture other than the horizontal installation, please contact us.

Ordering method

GF17XL - S H - 20

Model	Model	Installation direction	Lead designation	Cable entry location	Origin position change	Frame	Grease type	Stroke	Cable length
S: Straight model	H: Horizontal installation	No entry: Standard (S) U: From the top R: From the right L: From the left	None: Standard Z: Non-motor side	No entry: Standard (S) U: From the top R: From the right L: From the left	No entry: Standard (Spot facing) T: Tapping	None: Standard GC: Clean	850 to 2500 (50mm pitch)	3L: 3.5m 5L: 5m 10L: 10m 3K/5K/10K (Flexible cable)	

TSX	220	SR1-X	20	RDV-X	2	20	RBR1
Positioner TSX: TS-X	Driver: Power-supply voltage / Power capacity 220: 200V/400 to 600W	Controller 20: 400 to 600W	Usable for CE No entry: Standard E: CE marking R: With RGT	Driver 2: AC200V	Driver: Power capacity 20: 600W or less	Regenerative unit No entry: None L: With LCD	I/O selection NP: NPN P: PNP CC: CC-Link DN: DeviceNet™ EP: EtherNet/IP™ PT: PROFINET GW: No I/O board
			Regenerative unit No entry: None R: With RGT			I/O selection N: NPN P: PNP CC: CC-Link DN: DeviceNet™ EP: EtherNet/IP™ PB: PROFIBUS	Battery B: With battery (Absolute) N: None (Incremental)

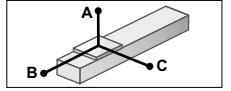
Note 1. The robot cable is standard cable (3L/5L/10L), but can be changed to flexible cable. See P.692 for details on robot cable.
 Note 2. See P.600 for DIN rail mounting bracket.
 Note 3. Select this selection when using the gateway function.
 Note 4. When operating the robot at a speed that is a maximum speed of 750 mm/sec or less, the regenerative unit is not needed.

[Cautions after purchase]
 • When changing the origin position, contact us since the adjustment is needed.
 • When changing the cable entry location, contact us since necessary parts may vary depending on the cable entry location.
 • Do not install the robot with the horizontal installation specifications in a direction other than the horizontal direction.

Specifications

AC servo motor output (W)	400
Repeatability ^{Note 1} (mm)	+/-0.01
Deceleration mechanism	Ball screw φ20
Ball screw lead (mm)	20
Maximum speed (mm/sec)	1200 ^{Note 2}
Maximum payload (kg)	90
Rated thrust (N)	339
Stroke (mm)	850 to 2500 (50mm pitch)
Overall length (mm)	Stroke+686
Maximum dimensions of cross section of main unit (mm)	W168×H105.5
Cable length (m)	Standard: 3.5 / Option: 5.10
Linear guide type	4 rows of circular arc grooves × 2 rail
Position detector	Resolvers ^{Note 3}
Resolution (Pulse/rotation)	20480

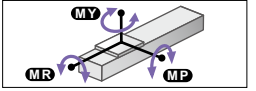
Allowable overhang^{Note}



Horizontal installation (Unit: mm)	A	B	C
30kg	4050	1090	1405
50kg	2755	650	835
90kg	1610	345	450

Note. Distance from center of slider top to center of gravity of object being carried at a guide service life of 10,000 km.
 Note. Service life is calculated for 1000mm stroke models.

Static loading moment



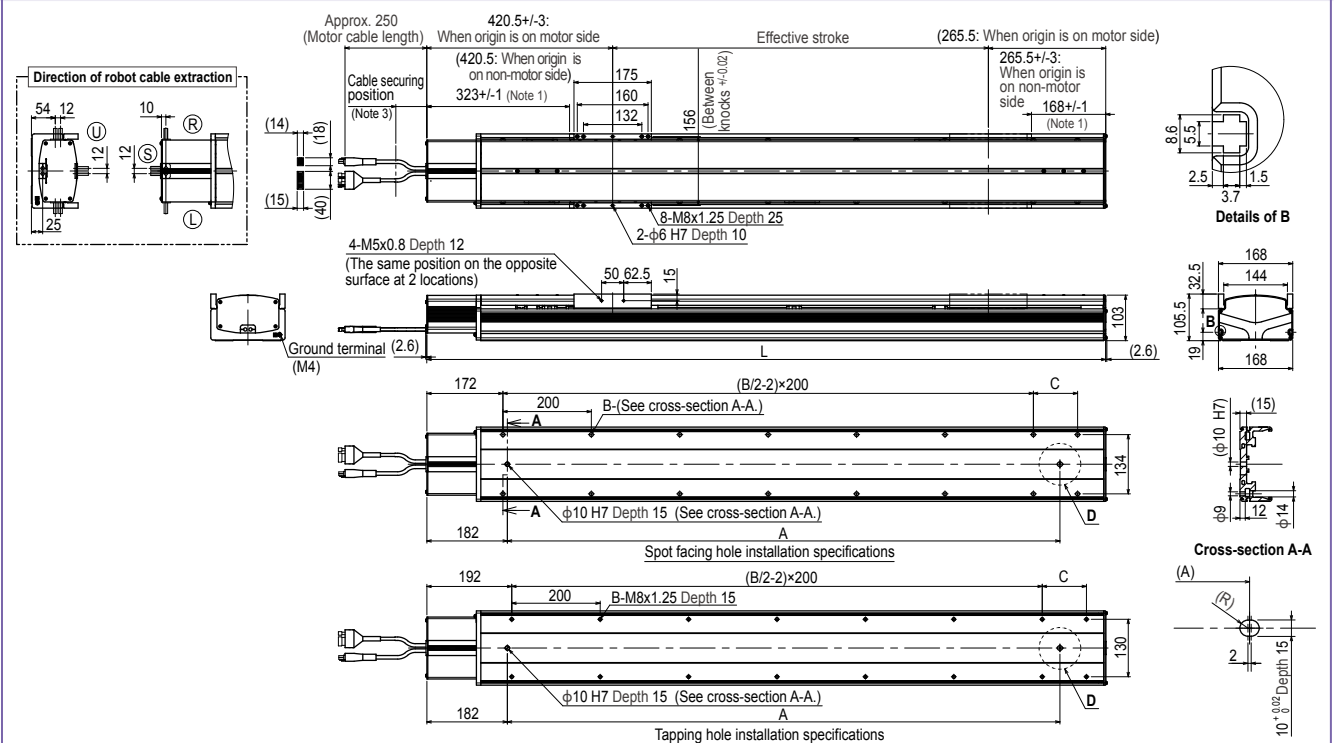
(Unit: N·m)		
MY	MP	MR
1032	1034	908

Controller

Controller	Operation method
SR1-X20 ^{Note} RCX320 RCX340	Programming / I/O point trace / Remote command / Operation using RS-232C communication
TS-X220	I/O point trace / Remote command
RDV-X220-RBR1	Pulse train control

Note. To operate the unit at a speed exceeding 750 mm/sec. (Max. speed), a regeneration unit is required.

GF17XL



Note 1. Stop positions are determined by the mechanical stoppers at both ends.
 Note 2. When changing the return-to-origin direction, the adjustment is needed. (The standard is the origin on the motor side.)
 Note 3. Secure the cable with a tie-band 100mm or less from unit's end face to prevent the cable from being subjected to excessive loads.
 Note 4. The cable's minimum bend radius is R30.
 Note 5. The length under head of the hexagonal socket head bolts (M8 x 1.25) that are used to install the main body with the spot facing hole installation specifications is 45 mm or more. It is recommended that the length under head of the hexagonal socket head bolts (M8 x 1.25) that are used to install the main body with the tapping hole installation specifications is the thickness of the installation base + 15 mm or less.

Effective stroke	850	900	950	1000	1050	1100	1150	1200	1250	1300	1350	1400	1450	1500	1550	1600	1650	1700	1750	1800	1850	1900	1950	2000	2050	2100	2150	2200	2250	2300	2350	2400	2450	2500
L	1536	1586	1636	1686	1736	1786	1836	1886	1936	1986	2036	2086	2136	2186	2236	2286	2336	2386	2436	2486	2536	2586	2636	2686	2736	2786	2836	2886	2936	2986	3036	3086	3136	3186
A	1250	1300	1350	1400	1450	1500	1550	1600	1650	1700	1750	1800	1850	1900	1950	2000	2050	2100	2150	2200	2250	2300	2350	2400	2450	2500	2550	2600	2650	2700	2750	2800	2850	2900
B	16	16	16	18	18	18	18	20	20	20	20	22	22	22	22	24	24	24	24	26	26	26	26	28	28	28	28	30	30	30	30	32	32	32
C	100	150	200	50	100	150	200	50	100	150	200	50	100	150	200	50	100	150	200	50	100	150	200	50	100	150	200	50	100	150	200	50	100	150
Weight (kg)	37.4	38.4	39.4	40.3	41.3	42.3	43.2	44.2	45.2	46.1	47.1	48.1	49.0	50.0	51.0	51.9	52.9	53.9	54.8	55.8	56.8	57.7	58.7	59.7	60.6	61.6	62.6	63.5	64.5	65.5	66.4	67.4	68.4	69.3