

YK300XGS

Wall mount / inverse type

● Arm length 300mm ● Maximum payload 5kg Note. Built-to-order product. Contact us for the delivery period.

Ordering method

YK300XGS **150** **RCX340-4**

Model	Installation method ^{Note1}	Z axis stroke	Tool flange	Hollow shaft	Cable	Controller / Number of controllable axes	Safety standard	Option A (OP.A)	Option B (OP.B)	Option C (OP.C)	Option D (OP.D)	Option E (OP.E)	Absolute battery
	W: Wall mount (same as per external view) U: Inverse wall mount (upside down)	150: 150mm	No entry: None F: With tool flange	No entry: None S: With hollow shaft	3L: 3.5m 5L: 5m 10L: 10m								

Specify various controller setting items. RCX340 ▶ **P.636**

Note 1. When installing the robot, always follow the specifications.
Do not install the ceiling-mount robot upside down or do not install the inverse type robot to a ceiling.
Incorrect installation can cause trouble or malfunction.

Specifications

	X-axis	Y-axis	Z-axis	R-axis
Axis specifications				
Arm length	150 mm	150 mm	150 mm	-
Rotation angle	+/-120 °	+/-130 °	-	+/-360 °
AC servo motor output	200 W	150 W	50 W	100 W
Deceleration mechanism	Direct-coupled			
Transmission method	Direct-coupled			
Motor to speed reducer	Direct-coupled			
Speed reducer to output	Direct-coupled			
Repeatability ^{Note 1}	+/-0.01 mm	+/-0.01 mm	+/-0.004 °	
Maximum speed	4.4 m/sec	1.0 m/sec	1020 °/sec (wall mount) 720 °/sec (inverse wall mount)	
Maximum payload	5 kg (Standard specification), 4 kg (Option specifications ^{Note 4})			
Standard cycle time: with 2kg payload ^{Note 2}	0.49 sec			
R-axis tolerable moment of inertia ^{Note 3}	0.05 kgm ²			
User wiring	0.2 sq × 10 wires			
User tubing (Outer diameter)	φ 4 × 3			
Travel limit	1.Soft limit 2.Mechanical stopper (X,Y,Z axis)			
Robot cable length	Standard: 3.5 m Option: 5 m, 10 m			
Weight	19.5 kg			

Note 1. This is the value at a constant ambient temperature.
Note 2. When reciprocating 25mm horizontally and 300mm horizontally (with a 2kg payload in rough-positioning arch motion).
Note 3. The acceleration coefficient is set automatically in accordance with the tip weight and R-axis moment of inertia settings.
Note 4. Maximum payload of option specifications (with tool flange attached or with user wiring and tubing routed through spline shaft) is 4kg.

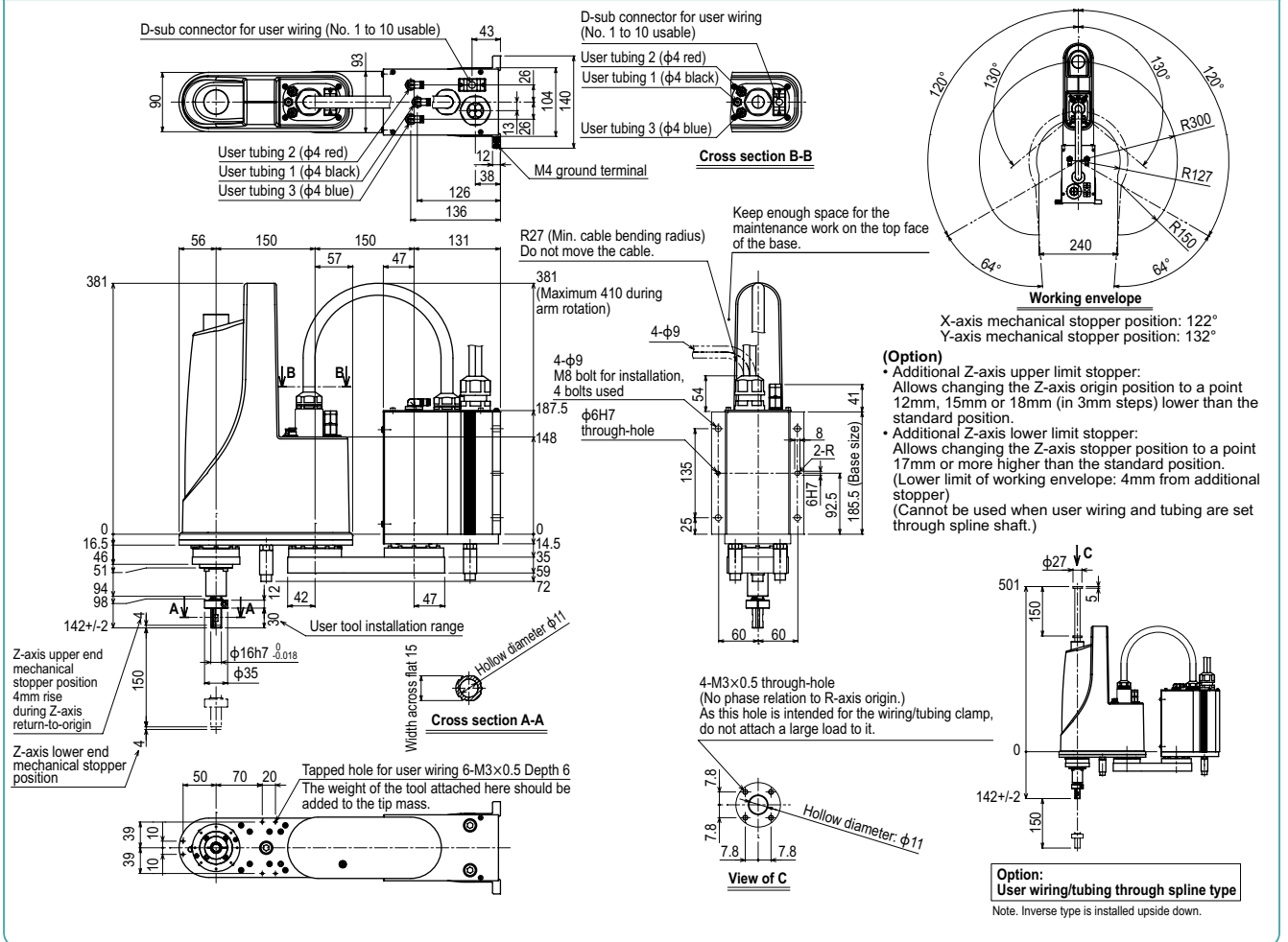
Controller

Controller	Power capacity (VA)	Operation method
RCX340	1000	Programming / I/O point trace / Remote command / Operation using RS-232C communication

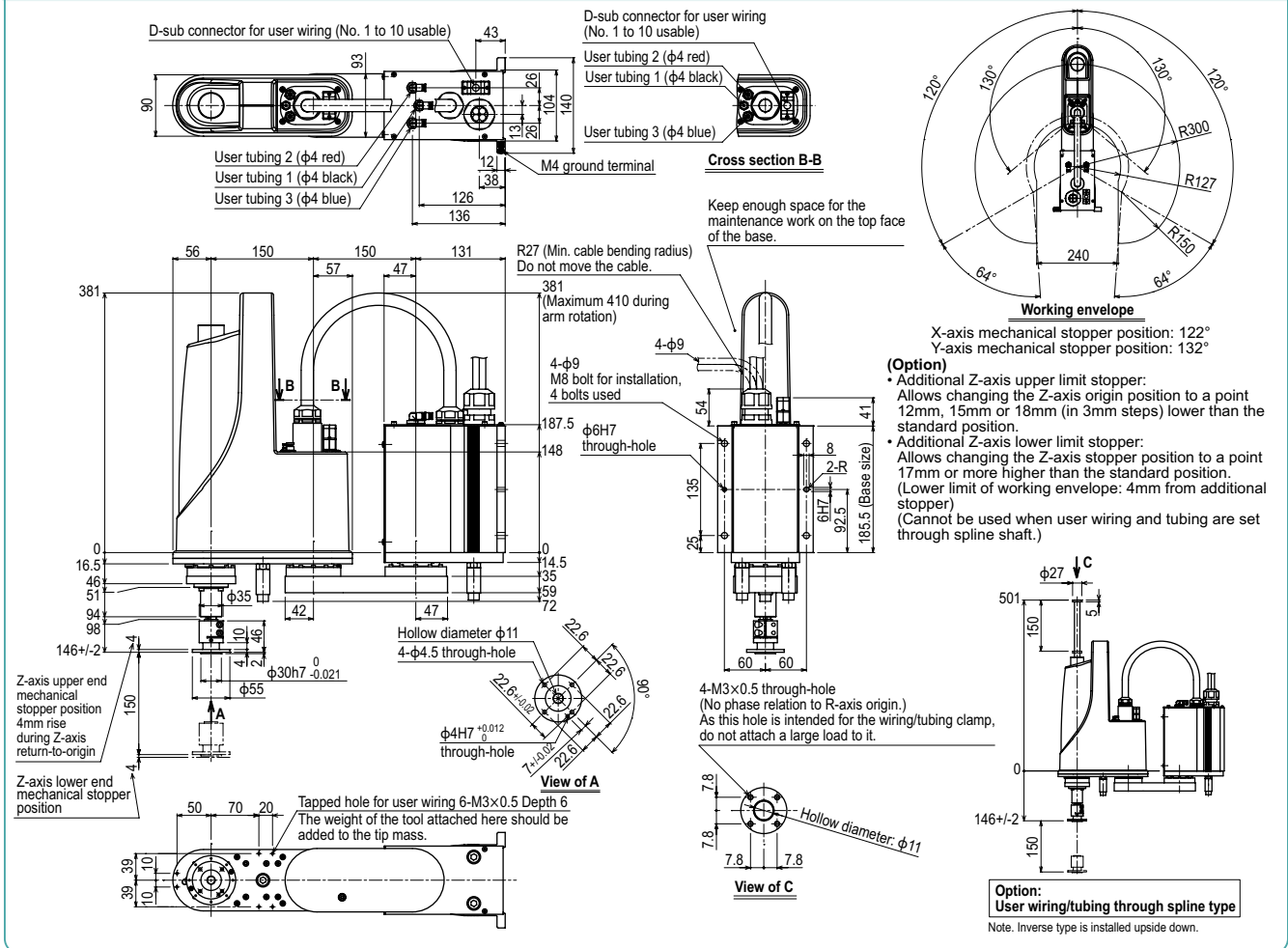
Note. The movement range can be limited by changing the position of Y axis mechanical stopper. (The movement range is set to the maximum at the time of shipment.)
See our robot manuals (installation manuals) for detailed information.

Our robot manuals (installation manuals) can be downloaded from our website at the address below:
<https://global.yamaha-motor.com/business/robot/>

YK300XGS



YK300XGS Tool flange mount type



YK400XGS

Wall mount / inverse type

● Arm length 400mm ● Maximum payload 5kg Note. Built-to-order product. Contact us for the delivery period.

Ordering method

YK400XGS **150** **RCX340-4**

Model	Installation method ^{Note1}	Z axis stroke	Tool flange	Hollow shaft	Cable	Controller / Number of controllable axes	Safety standard	Option A (OP.A)	Option B (OP.B)	Option C (OP.C)	Option D (OP.D)	Option E (OP.E)	Absolute battery
	W: Wall mount (same as per external view) U: Inverse wall mount (upside down)	150: 150mm	No entry: None F: With tool flange	No entry: None S: With hollow shaft	3L: 3.5m 5L: 5m 10L: 10m								

Specify various controller setting items. RCX340 ▶ **P.636**

Note 1. When installing the robot, always follow the specifications.
Do not install the ceiling-mount robot upside down or do not install the inverse type robot to a ceiling.
Incorrect installation can cause trouble or malfunction.

Specifications

	X-axis	Y-axis	Z-axis	R-axis
Axis specifications	250 mm	150 mm	150 mm	-
Rotation angle	+/-125 °	+/-144 °	-	+/-360 °
AC servo motor output	200 W	150 W	50 W	100 W
Deceleration mechanism	Direct-coupled			
Transmission method	Direct-coupled			
Motor to speed reducer	Direct-coupled			
Speed reducer to output	Direct-coupled			
Repeatability ^{Note 1}	+/-0.01 mm	+/-0.01 mm	+/-0.004 °	
Maximum speed	6.1 m/sec	1.1 m/sec	1020 °/sec (wall mount) 720 °/sec (inverse wall mount)	
Maximum payload	5 kg (Standard specification), 4 kg (Option specifications ^{Note 4})			
Standard cycle time: with 2kg payload ^{Note 2}	0.49 sec			
R-axis tolerable moment of inertia ^{Note 3}	0.05 kgm ²			
User wiring	0.2 sq × 10 wires			
User tubing (Outer diameter)	φ 4 × 3			
Travel limit	1. Soft limit 2. Mechanical stopper (X,Y,Z axis)			
Robot cable length	Standard: 3.5 m Option: 5 m, 10 m			
Weight	20 kg			

Note 1. This is the value at a constant ambient temperature.
Note 2. When reciprocating 25mm horizontally and 300mm horizontally (with a 2kg payload in rough-positioning arch motion).
Note 3. The acceleration coefficient is set automatically in accordance with the tip weight and R-axis moment of inertia settings.
Note 4. Maximum payload of option specifications (with tool flange attached or with user wiring and tubing routed through spline shaft) is 4kg.

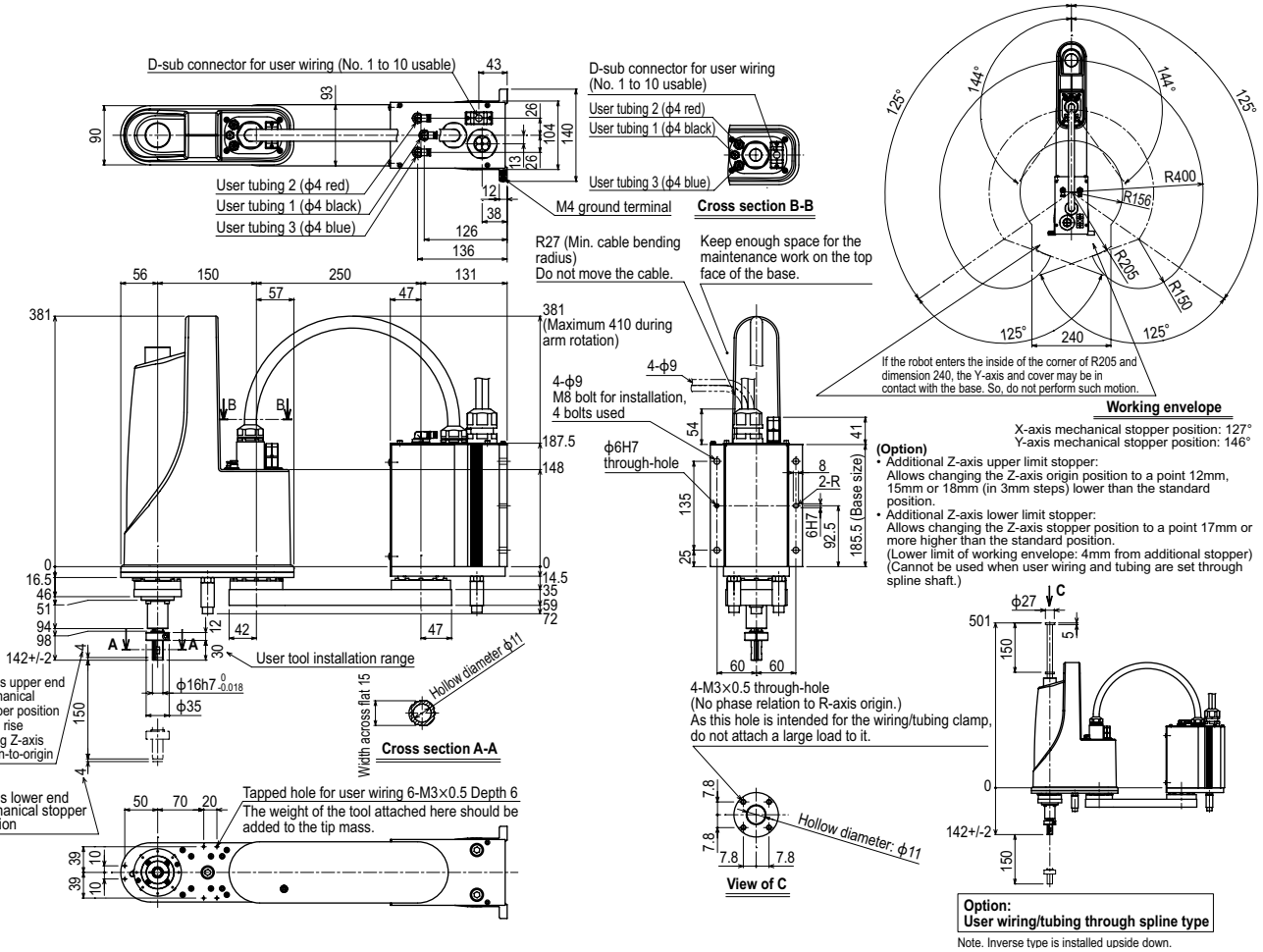
Controller

Controller	Power capacity (VA)	Operation method
RCX340	1000	Programming / I/O point trace / Remote command / Operation using RS-232C communication

Note. The movement range can be limited by changing the position of Y axis mechanical stopper. (The movement range is set to the maximum at the time of shipment.)
See our robot manuals (installation manuals) for detailed information.

Our robot manuals (installation manuals) can be downloaded from our website at the address below:
<https://global.yamaha-motor.com/business/robot/>

YK400XGS



Linear conveyor modules
LCMR200
Single-axis robots
GX
Linear conveyor modules
LCM100
SCARA robots
YK-X
Single-axis robots
Robonity
Linear motor single-axis robots
PHASER
Single-axis robots
FLIP-X
Compact single-axis robots
TRANSERO
Cartesian robots
XX-X
Pick & place robots
YP-X
CLEAN
CONTROLLER INFORMATION
Oht/Extra small type
Small / Medium type
Large type
Wall mount / Inverse type
Dust-proof & drip-proof type

YK500XGS

Wall mount / inverse type

● Arm length 500mm ● Maximum payload 10kg

Ordering method

YK500XGS					RCX340-4							
Model	Installation method <small>Note 1</small>	Z axis stroke	Tool flange	Cable	Controller / Number of controllable axes	Safety standard	Option A (OP.A)	Option B (OP.B)	Option C (OP.C)	Option D (OP.D)	Option E (OP.E)	Absolute battery
	W: Wall mount (same as per external view) I: Inverse wall mount (upside down)	200: 200mm 300: 300mm	No entry: None F: With tool flange	3L: 3.5m 5L: 5m 10L: 10m								

Specify various controller setting items. RCX340 ▶ **P.636**

Note 1. When installing the robot, always follow the specifications.
Do not install the ceiling-mount robot upside down or do not install the inverse type robot to a ceiling.
Incorrect installation can cause trouble or malfunction.

Specifications

		X-axis	Y-axis	Z-axis	R-axis
Axis specifications	Arm length	200 mm	300 mm	200 mm/300 mm	—
	Rotation angle	+/-105 °	+/-125 °	—	+/-360 °
AC servo motor output		400 W	200 W	200 W	200 W
Deceleration mechanism	Transmission method	Direct-coupled			
	Motor to speed reducer Speed reducer to output	Direct-coupled			
Repeatability <small>Note 1</small>		+/-0.01 mm		+/-0.01 mm	+/-0.004 °
Maximum speed		7.6 m/sec		2.3 m/sec 1.7 m/sec	1700 °/sec (wall mount) 800 °/sec (inverse wall mount)
Maximum payload		10 kg (Standard type), 9 kg (Tool flange mount type)			
Standard cycle time: with 2kg payload <small>Note 2</small>		0.45 sec			
R-axis tolerable moment of inertia <small>Note 3</small>		0.30 kgm ²			
User wiring		0.2 sq × 20 wires			
User tubing (Outer diameter)		φ 6 × 3			
Travel limit		1. Soft limit 2. Mechanical stopper (X,Y,Z axis)			
Robot cable length		Standard: 3.5 m Option: 5 m, 10 m			
Weight		30 kg			

Note 1. This is the value at a constant ambient temperature. (X,Y axes)
Note 2. When reciprocating 300mm in horizontal and 25mm in vertical directions.
Note 3. The acceleration coefficient is set automatically in accordance with the tip weight and R-axis moment of inertia settings.
Note. Please consult YAMAHA when connecting other tubes and cables to the self-supporting machine harness.

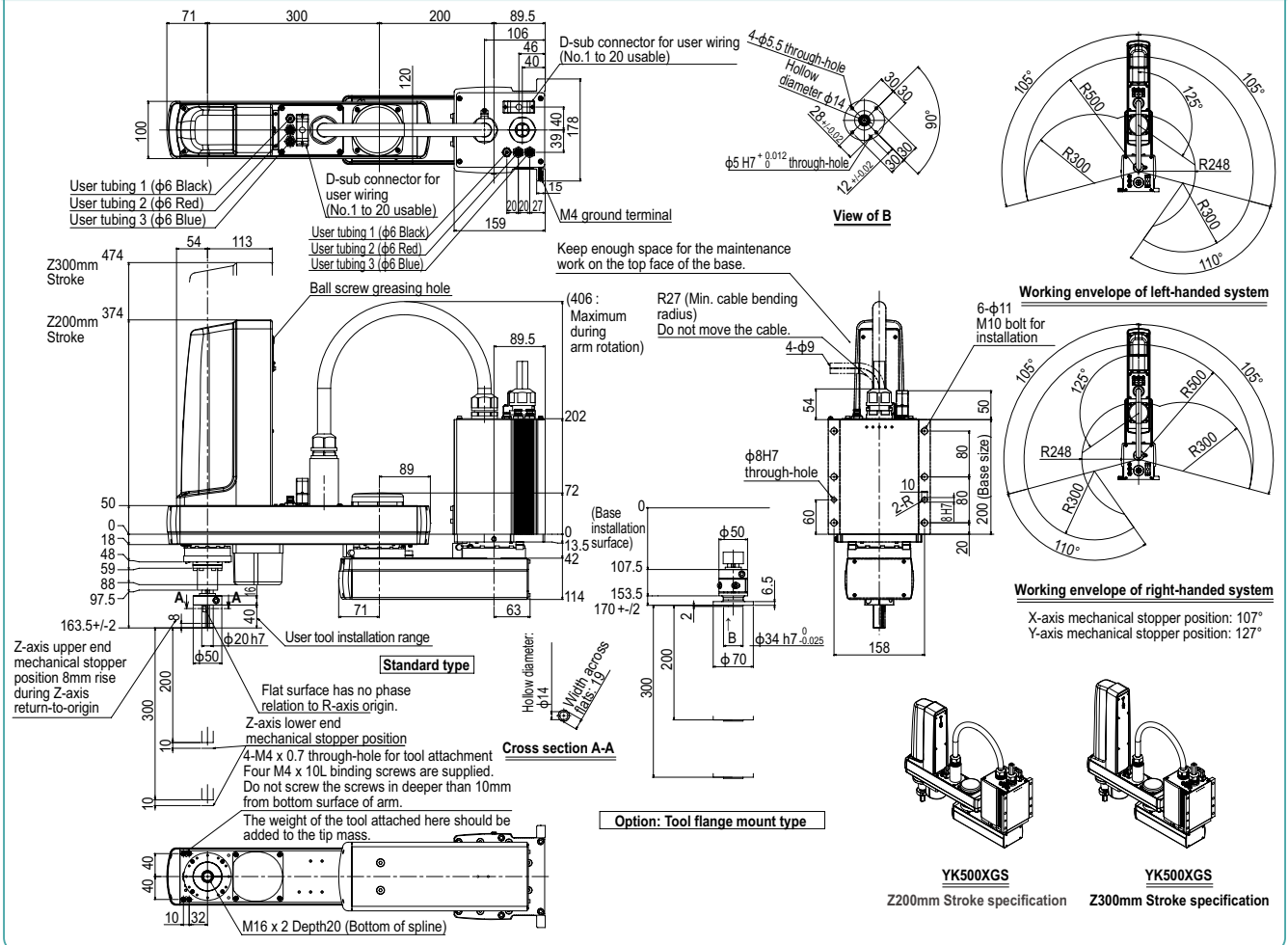
Controller

Controller	Power capacity (VA)	Operation method
RCX340	1700	Programming / I/O point trace / Remote command / Operation using RS-232C communication

Note. The movement range can be limited by changing the positions of X and Y axis mechanical stoppers. (The movement range is set to the maximum at the time of shipment.)
See our robot manuals (installation manuals) for detailed information.

Our robot manuals (installation manuals) can be downloaded from our website at the address below:
<https://global.yamaha-motor.com/business/robot/>

YK500XGS



Linear conveyor modules
LCMR200

Single-axis robots
GX

Linear conveyor modules
LCM100

SCARA robots
YK-X

Single-axis robots
Robonity

Linear motor single-axis robots
PHASER

Single-axis robots
FLIP-X

Compact single-axis robots
TRANSERO

Cartesian robots
XX-X

Pick & place robots
YP-X

CLEAN

CONTROLLER INFORMATION

Ortho/Extra small type

Small / Medium type

Large type

Wall mount / Inverse type

Dust-proof & drip-proof type

YK600XGS

Wall mount / inverse type

- Arm length 600mm
- Maximum payload 10kg

Ordering method

YK600XGS					RCX340-4										
Model	Installation method <small>Note 1</small>	Z axis stroke	Tool flange	Cable	Controller / Number of controllable axes	Safety standard	Option A (OP.A)	Option B (OP.B)	Option C (OP.C)	Option D (OP.D)	Option E (OP.E)	Absolute battery			
	W: Wall mount (same as per external view) U: Inverse wall mount (upside down)	200: 200mm 300: 300mm	No entry: None F: With tool flange	3L: 3.5m 5L: 5m 10L: 10m									Specify various controller setting items. RCX340 ▶ P.636		

Note 1. When installing the robot, always follow the specifications.
Do not install the ceiling-mount robot upside down or do not install the inverse type robot to a ceiling.
Incorrect installation can cause trouble or malfunction.

Specifications

Axis specifications	Arm length	X-axis	Y-axis	Z-axis	R-axis
	Rotation angle	+/-130°	+/-145°	-	+/-360°
	AC servo motor output	400 W	200 W	200 W	200 W
Deceleration mechanism	Transmission method	Direct-coupled			
	Motor to speed reducer	Direct-coupled			
	Speed reducer to output	Direct-coupled			
Repeatability <small>Note 1</small>		+/-0.01 mm	+/-0.01 mm	+/-0.01 mm	+/-0.004°
Maximum speed		8.4 m/sec	2.3 m/sec	1.7 m/sec	1700 °/sec (wall mount) 800 °/sec (inverse wall mount)
Maximum payload		10 kg (Standard type), 9 kg (Tool flange mount type)			
Standard cycle time: with 2kg payload <small>Note 2</small>		0.46 sec			
R-axis tolerable moment of inertia <small>Note 3</small>		0.30 kgm ²			
User wiring		0.2 sq x 20 wires			
User tubing (Outer diameter)		φ 6 x 3			
Travel limit		1. Soft limit 2. Mechanical stopper (X,Y,Z axis)			
Robot cable length		Standard: 3.5 m Option: 5 m, 10 m			
Weight		31 kg			

Note 1. This is the value at a constant ambient temperature. (X,Y axes)
Note 2. When reciprocating 300mm in horizontal and 25mm in vertical directions.
Note 3. The acceleration coefficient is set automatically in accordance with the tip weight and R-axis moment of inertia settings.
Note. Please consult YAMAHA when connecting other tubes and cables to the self-supporting machine harness.

Controller

Controller	Power capacity (VA)	Operation method
RCX340	1700	Programming / I/O point trace / Remote command / Operation using RS-232C communication

Note. The movement range can be limited by changing the positions of X and Y axis mechanical stoppers. (The movement range is set to the maximum at the time of shipment.)
See our robot manuals (installation manuals) for detailed information.

Our robot manuals (installation manuals) can be downloaded from our website at the address below:
<https://global.yamaha-motor.com/business/robot/>

YK600XGS

