



ELSHIN INTERNATIONAL PTE LTD
CORPORATE PROFILE

Authorised distributor and supplier of industrial automation,
motion control, and mechanical components since 1994.



COMPANY OVERVIEW

Elshin International Pte Ltd is a Singapore-based supplier of industrial automation, motion control, and mechanical components, supporting the engineering, manufacturing, and maintenance sectors since 1994. Over the years, we have built a strong reputation as a trusted partner for businesses seeking reliable industrial products, practical technical support, and responsive service.

As an authorised distributor and supplier of industrial automation components, Elshin offers a broad range of products for industrial applications. Our portfolio includes linear motion systems, actuators and automation modules, industrial robots and motion systems, motion control and drives, power transmission and mechanical components, pneumatics and factory automation, sensors and industrial controls, damping and vibration control, maintenance and lubrication solutions, and industrial cooling systems. These products support a wide range of machinery, automation, and manufacturing requirements across multiple industries.

Beyond Singapore, Elshin has established a sales footprint in Malaysia, Indonesia, Vietnam, Poland, France, the Czech Republic, the Philippines, and Canada, reflecting our ability to support customers across multiple markets with consistent and reliable solutions.

At Elshin, we are committed to delivering authentic products, trusted quality, and responsive support. With decades of industry experience and a customer-focused approach, we continue to help businesses improve efficiency, performance, and operational reliability through practical industrial and automation solutions.

QE ENGINEERING

Established in 1999, QE Engineering is Elshin's subsidiary dedicated to providing machining and fabrication services that complement our industrial product supply. By offering in-house engineering capabilities, QE Engineering enables us to support customers with practical solutions for component modification, customisation, and integration requirements.

With experience in precision machining and fabrication, QE Engineering supports customers in preparing and adapting mechanical components for their specific applications. These services help ensure that supplied components are properly configured for installation, improving efficiency during machine assembly and system integration.

Our Capabilities



CNC Turning and Milling

Precision CNC machining for customised components and application-specific modifications.



Conventional Lathe and Milling

Supporting small-batch machining and component adjustments for mechanical applications.



Surface Grinding

Achieving precise surface finishes and dimensional accuracy for machined components.



Ball & Lead Screw End Machining

Customised end machining to suit mounting configurations and system integration requirements.



Actuator Bracket Fabrication

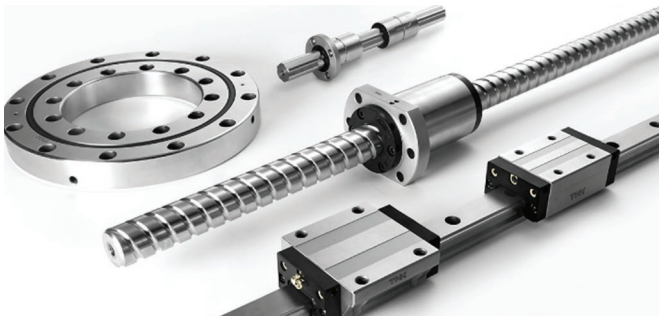
Fabrication of mounting brackets and supporting components for actuator installations.

“Bridging product supply with practical engineering solutions.”

WHAT WE OFFER

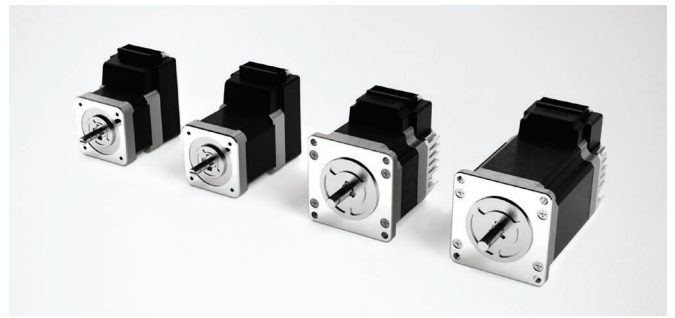
Elshin provides a comprehensive range of industrial automation, motion control, and mechanical components to support machinery, equipment manufacturing, and factory automation applications. Our solutions portfolio brings together precision motion technologies, automation systems, and supporting mechanical components designed to meet the operational needs of engineering and manufacturing environments.

Our **product portfolio** includes:



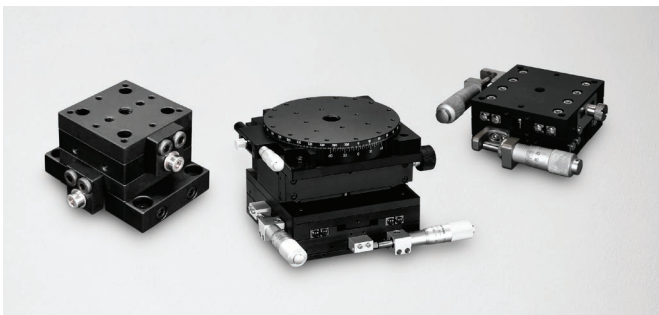
LINEAR MOTION SYSTEMS

LM guides, ball screws, ball splines, linear bushings, roller slides, and precision motion components.



MOTION CONTROL & DRIVES

Servo systems, controllers, and motion-related solutions for precise machine control.



PRECISION POSITIONING SYSTEMS

Manual stages, motorised stages, fixed stages, and alignment systems for accurate positioning applications.



ACTUATORS & AUTOMATION MODULES

Electric cylinders, belt-driven systems, ball screw-driven actuators, and linear modules for controlled motion.



POWER TRANSMISSION & MECHANICAL COMPONENTS

Couplings, clutches, brakes, bushings, and locking elements for mechanical transmission systems.



INDUSTRIAL COOLING & POWER SOLUTIONS

Cooling fans and related thermal management products for industrial applications.



SENSORS AND INDUSTRIAL CONTROLS

Pressure switches, transmitters, vacuum switches, and monitoring devices for control applications.



INDUSTRIAL ROBOTS & MOTION SYSTEMS

Linear robots, SCARA robots, gantry systems, wafer transfer robots, desktop robots, and controllers.



PNEUMATICS & FACTORY AUTOMATION

Air cylinders, valves, regulators, fittings, vacuum equipment, and automation accessories.



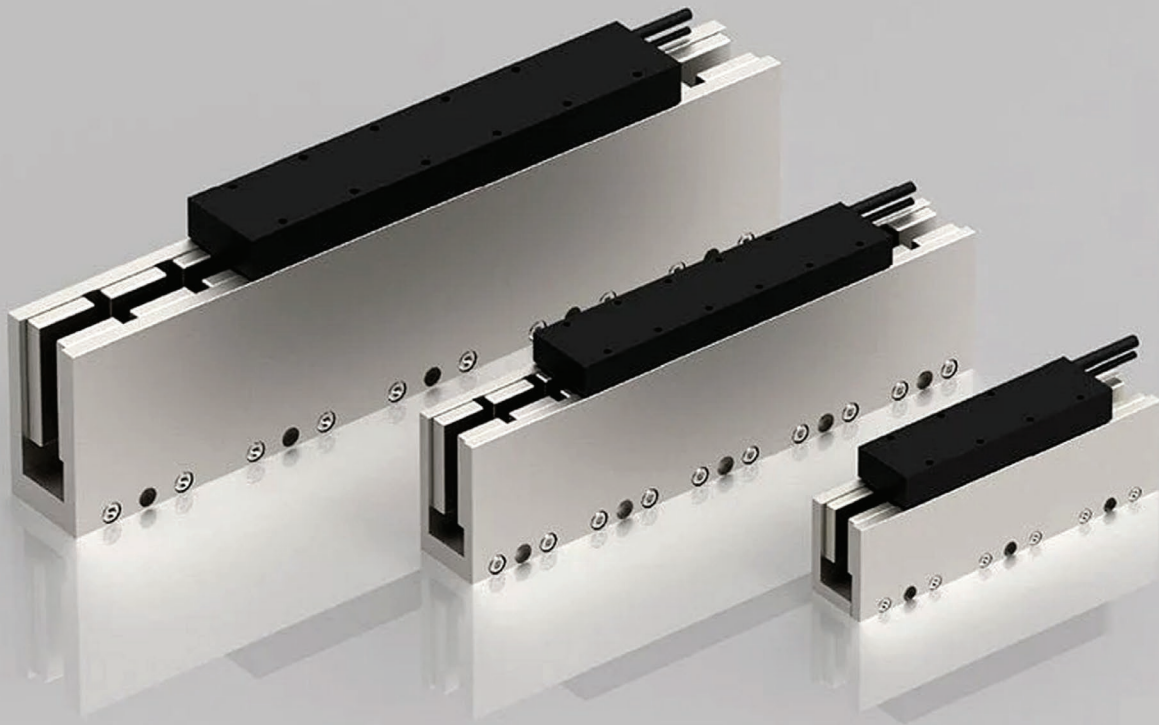
DAMPING & VIBRATION CONTROL

Shock absorbers, dampers, and motion control products for smoother and more controlled operation.

BRANDS WE REPRESENT

We partner with established manufacturers to deliver industrial automation, motion control, and mechanical solutions across a wide range of applications.





OUR IN-HOUSE BRAND



Elshin Linear Motor (ELM) is Elshin's in-house linear motor brand, developed to offer a cost-effective solution for industrial motion applications. Manufactured through a China OEM partnership, ELM strengthens our motion solution portfolio with a practical range of products designed for precision, responsiveness, and integration flexibility.

The ELM range includes linear shaft motors, coreless and iron core linear motors, direct drive and voice coil solutions, as well as magnetic and optical encoders. ELM's DDM solutions have also been tested with Kingservo, Servotronix, and Sanyo Denki linear drivers, supporting compatibility across selected motion control applications.

By combining stable performance with cost-effectiveness, ELM provides customers with an accessible linear motor solution for a wide range of industrial and automation requirements.

WHY ELSHIN

At Elshin International, we combine decades of industry experience with a strong commitment to quality, reliability, and responsive support. Since our establishment in 1994, we have worked closely with customers across a wide range of industries, supplying industrial automation, motion control, and mechanical components for demanding engineering and manufacturing applications.

Our approach is centred on understanding customer requirements and delivering practical solutions that improve operational efficiency, machine performance, and long-term system reliability. By combining a broad product portfolio with technical support and value-added engineering capabilities, we aim to be a trusted partner for businesses seeking high-quality and practical industrial solutions.

Our Key Strengths



Trusted Product Quality

Our product portfolio is carefully selected to ensure reliability, performance, and suitability for industrial applications.



Industry Experience Since 1994

With decades of experience in the industrial sector, Elshin understands the operational needs and challenges faced by engineering and manufacturing environments.



Broad Product Portfolio

From motion systems and actuators to pneumatics, sensors, and mechanical components, we support a wide range of industrial requirements.



Value-Added Engineering Support

Through our subsidiary **QE Engineering**, we provide machining and fabrication services including ball screw end machining and actuator bracket fabrication to support customer-specific requirements.



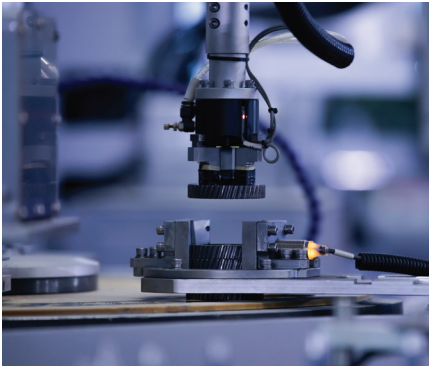
Technical and Sales Support

Our team provides responsive sales assistance and practical technical support to help customers identify suitable solutions.

INDUSTRIES WE SERVE

Elshin supports a broad spectrum of industries that rely on advanced automation, precision motion, and industrial engineering solutions to achieve consistent operational performance. Our products are used in applications requiring high accuracy, controlled movement, mechanical stability, and efficient system integration across manufacturing, equipment building, and advanced technology environments.

With experience supporting customers in semiconductor and electronics manufacturing, precision engineering and machinery, industrial automation and robotics, life sciences and analytical instruments, advanced manufacturing and research, and data storage technology, Elshin is well positioned to meet diverse application needs. Our ability to serve these sectors reflects both the breadth of our portfolio and our commitment to practical, customer-focused support.



**SEMICONDUCTOR &
ELECTRONICS MANUFACTURING**



**PRECISION ENGINEERING
& MACHINERY**



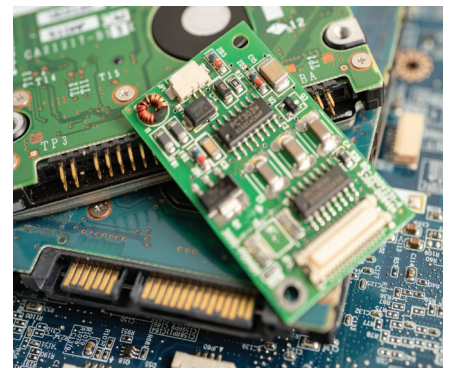
**INDUSTRIAL AUTOMATION
& ROBOTICS**



**LIFE SCIENCES &
ANALYTICAL INSTRUMENTS**



**ADVANCED MANUFACTURING
& RESEARCH**



**DATA STORAGE &
ELECTRONICS TECHNOLOGY**

CONTACT US

ADDRESS

1 Kaki Bukit Avenue 3, KB-1, #06-12
Singapore 416087

PHONE

+65 6286 7707

EMAIL

elshin@singnet.com.sg

WEB

www.elshin.com