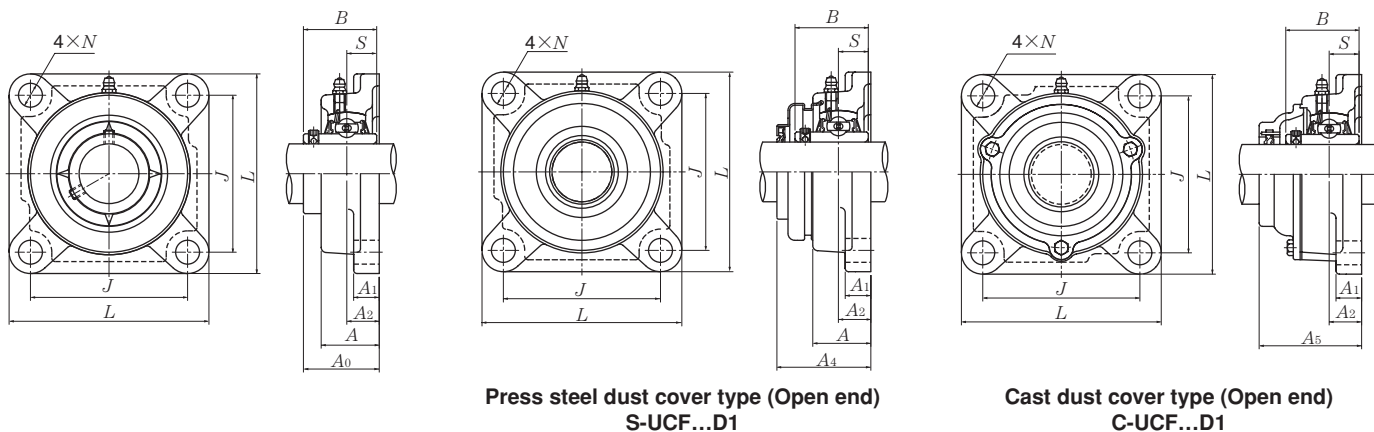


Square flanged units cast housing Set screw type



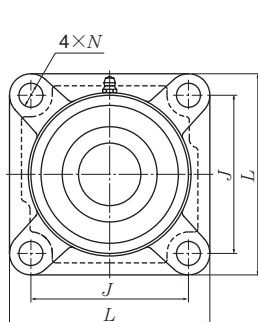
Press steel dust cover type (Open end)
S-UCF...D1

Cast dust cover type (Open end)
C-UCF...D1

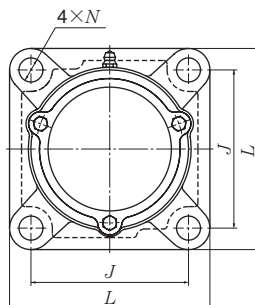
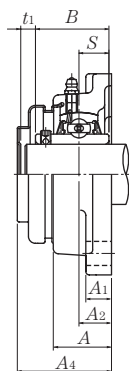
Shaft dia. mm inch	Unit number ¹⁾	Nominal dimensions									Bolt size mm inch	Bearing number
		<i>L</i>	<i>J</i>	<i>A</i> ₂	<i>A</i> ₁	<i>A</i>	<i>N</i>	<i>A</i> ₀	<i>B</i>	<i>S</i>		
25 13/16 7/8 15/16 1	UCFX05D1	108	83	18	13	30	12	40.2	38.1	15.9	M10 3/8	UCX05D1
	UCFX05-013D1											UCX05-013D1
	UCFX05-014D1											UCX05-014D1
	UCFX05-015D1											UCX05-015D1
	UCFX05-100D1										UCX05-100D1	
30 1 1/16 1 1/8 1 3/16 1 1/4	UCFX06D1	117	92	19	14	34	16	44.4	42.9	17.5	M14 1/2	UCX06D1
	UCFX06-101D1											UCX06-101D1
	UCFX06-102D1											UCX06-102D1
	UCFX06-103D1											UCX06-103D1
	UCFX06-104D1										UC207-104D1	
35 1 5/16 1 3/8 1 7/16	UCFX07D1	130	102	21	14	38	16	51.2	49.2	19	M14 1/2	UCX07D1
	UCFX07-105D1											UCX07-105D1
	UCFX07-106D1											UCX07-106D1
	UCFX07-107D1										UCX07-107D1	
40 1 1/2 1 9/16	UCFX08D1	137	105	22	14	40	19	52.2	49.2	19	M16 5/8	UCX08D1
	UCFX08-108D1											UCX08-108D1
	UCFX08-109D1											UCX08-109D1
45 1 5/8 1 11/16 1 3/4 1 13/16	UCFX09D1	143	111	23	14	40	19	55.6	51.6	19	M16 5/8	UCX09D1
	UCFX09-110D1											UCX09-110D1
	UCFX09-111D1											UCX09-111D1
	UCFX09-112D1											UCX09-112D1
	UCFX09-113D1										UC210-113D1	
50 1 7/8 1 15/16 2	UCFX10D1	162	130	26	20	44	19	59.4	55.6	22.2	M16 5/8	UCX10D1
	UCFX10-114D1											UCX10-114D1
	UCFX10-115D1											UCX10-115D1
	UCFX10-200D1											UC211-200D1

Remarks: 1) These numbers indicate relubricatable type. If maintenance free type is needed, please order without suffix "D1".

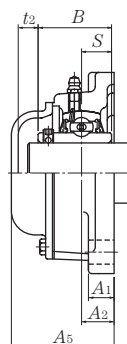
Note: Please refer to page 44 for size of grease fitting.



Press steel dust cover type (Close end)
SM-UCF...D1



Cast dust cover type (Close end)
CM-UCF...D1



Housing number ¹⁾	Unit number ¹⁾ pressed steel dust cover type	Unit number ¹⁾ cast dust cover type	Nominal dimensions				Mass (approx.)		
			mm		inch		kg		lb
			t_1	t_2	A_4	A_5	UCFX	S(SM)	C(CM)
FX05D1	—	C(CM)-UCFX05D1	7	11	49	56	1.1	1.2	1.3
FX05D1	—	C(CM)-UCFX05-013D1							
FX05D1	—	C(CM)-UCFX05-014D1	$\frac{9}{32}$	$\frac{7}{16}$	$1\frac{15}{16}$	$2\frac{7}{32}$	2.4	2.7	2.9
FX05D1	—	C(CM)-UCFX05-015D1							
FX05D1	—	C(CM)-UCFX05-100D1							
FX06D1	—	C(CM)-UCFX06D1	8	10	55	59	1.7	1.8	1.9
FX06D1	—	C(CM)-UCFX06-101D1							
FX06D1	—	C(CM)-UCFX06-102D1	$\frac{5}{16}$	$\frac{25}{64}$	$2\frac{5}{32}$	$2\frac{5}{16}$	3.8	4.0	4.2
FX06D1	—	C(CM)-UCFX06-103D1							
FX06D1	—	C(CM)-UCFX06-104D1							
FX07D1	S(SM)-UCFX07D1	C(CM)-UCFX07D1	8	9	62	66	2.1	2.2	2.5
FX07D1	S(SM)-UCFX07-105D1	C(CM)-UCFX07-105D1							
FX07D1	S(SM)-UCFX07-106D1	C(CM)-UCFX07-106D1	$\frac{5}{16}$	$\frac{23}{64}$	$2\frac{7}{16}$	$2\frac{19}{32}$	4.6	4.9	5.5
FX07D1	S(SM)-UCFX07-107D1	C(CM)-UCFX07-107D1							
FX08D1	S(SM)-UCFX08D1	C(CM)-UCFX08D1	8	12	63	70	2.3	2.4	2.7
FX08D1	S(SM)-UCFX08-108D1	C(CM)-UCFX08-108D1							
FX08D1	S(SM)-UCFX08-109D1	C(CM)-UCFX08-109D1	$\frac{5}{16}$	$\frac{15}{32}$	$2\frac{15}{32}$	$2\frac{3}{4}$	5.1	5.3	6.0
FX09D1	S(SM)-UCFX09D1	C(CM)-UCFX09D1	7	12	65.5	73	2.5	2.6	3.0
FX09D1	S(SM)-UCFX09-110D1	C(CM)-UCFX09-110D1							
FX09D1	S(SM)-UCFX09-111D1	C(CM)-UCFX09-111D1							
FX09D1	S(SM)-UCFX09-112D1	C(CM)-UCFX09-112D1	$\frac{9}{32}$	$\frac{15}{32}$	$2\frac{19}{32}$	$2\frac{7}{8}$	5.5	5.7	6.6
FX09D1	S(SM)-UCFX09-113D1	C(CM)-UCFX09-113D1							
FX10D1	S(SM)-UCFX10D1	C(CM)-UCFX10D1	9	11	71	76	3.8	3.9	4.3
FX10D1	S(SM)-UCFX10-114D1	C(CM)-UCFX10-114D1							
FX10D1	S(SM)-UCFX10-115D1	C(CM)-UCFX10-115D1	$\frac{23}{64}$	$\frac{7}{16}$	$2\frac{25}{32}$	3	8.4	8.6	9.5
FX10D1	S(SM)-UCFX10-200D1	C(CM)-UCFX10-200D1							