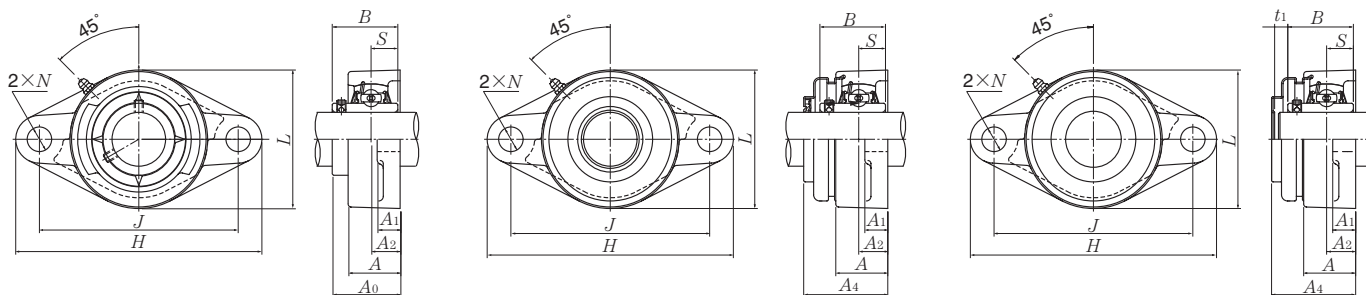


Rhombus flanged units cast housing  
Set screw type

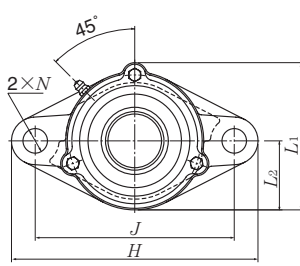


Press steel dust cover type (Open end)  
S-UCFLX...D1

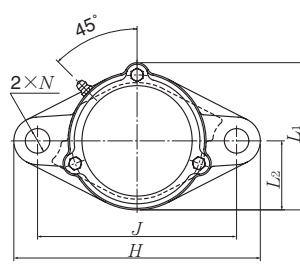
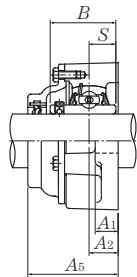
Press steel dust cover type (Close end)  
SM-UCFLX...D1

Shaft dia. mm inch	Unit number <sup>1)</sup>	Nominal dimensions										Bolt size mm inch	Bearing number
		mm					inch						
		H	J	A <sub>2</sub>	A <sub>1</sub>	A	N	L	A <sub>0</sub>	B	S		
25 13/16 7/8 15/16 1	UCFLX05D1	141	117	18	13	30	12	83	40.2	38.1	15.9	M10  3/8	UCX05D1
	UCFLX05-013D1												UCX05-013D1
	UCFLX05-014D1												UCX05-014D1
	UCFLX05-015D1												UCX05-015D1
	UCFLX05-100D1												UCX05-100D1
30 1 1/16 1 1/8 1 3/16 1 1/4	UCFLX06D1	156	130	19	15	34	16	95	44.4	42.9	17.5	M14  1/2	UCX06D1
	UCFLX06-101D1												UCX06-101D1
	UCFLX06-102D1												UCX06-102D1
	UCFLX06-103D1												UCX06-103D1
	UCFLX06-104D1												UC207-104D1
35 1 5/16 1 3/8 1 7/16	UCFLX07D1	171	144	21	16	38	16	105	51.2	49.2	19	M14  1/2	UCX07D1
	UCFLX07-105D1												UCX07-105D1
	UCFLX07-106D1												UCX07-106D1
	UCFLX07-107D1												UCX07-107D1
40 1 1/2 1 9/16	UCFLX08D1	179	148	22	16	40	16	111	52.2	49.2	19	M14  1/2	UCX08D1
	UCFLX08-108D1												UCX08-108D1
	UCFLX08-109D1												UCX08-109D1
45 1 5/8 1 11/16 1 3/4 1 13/16	UCFLX09D1	189	157	23	16	40	16	116	55.6	51.6	19	M14  1/2	UCX09D1
	UCFLX09-110D1												UCX09-110D1
	UCFLX09-111D1												UCX09-111D1
	UCFLX09-112D1												UCX09-112D1
	UCFLX09-113D1												UC210-113D1
50 1 7/8 1 15/16 2	UCFLX10D1	216	184	26	18	44	19	133	59.4	55.6	22.2	M16  5/8	UCX10D1
	UCFLX10-114D1												UCX10-114D1
	UCFLX10-115D1												UCX10-115D1
	UCFLX10-200D1												UC211-200D1

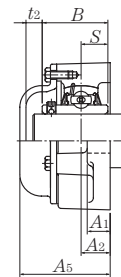
Remarks: 1) These numbers indicate relubricatable type. If maintenance free type is needed, please order without suffix "D1".  
Note: Please refer to page 44 for size of grease fitting.



Cast dust cover type (Open end)  
C-UCFLX...D1



Cast dust cover type (Close end)  
CM-UCFLX...D1



Housing number <sup>1)</sup>	Unit number <sup>1)</sup> pressed steel dust cover type	Unit number <sup>1)</sup> cast dust cover type	Nominal dimensions						Mass (approx.)		
			mm			inch			kg		lb
			$t_1$	$t_2$	$A_4$	$A_5$	$L_1$	$L_2$	UCFLX	S(SM)	C(CM)
FLX05D1	<b>S(SM)-UCFLX05D1</b>	<b>C(CM)-UCFLX05D1</b>	7	11	49	56	86	41.5	1.0	1.0	1.2
FLX05D1	<b>S(SM)-UCFLX05-013D1</b>	<b>C(CM)-UCFLX05-013D1</b>									
FLX05D1	<b>S(SM)-UCFLX05-014D1</b>	<b>C(CM)-UCFLX05-014D1</b>	$\frac{9}{32}$	$\frac{7}{16}$	$1\frac{15}{16}$	$2\frac{7}{32}$	$3\frac{3}{8}$	$1\frac{5}{8}$	2.2	2.2	2.7
FLX05D1	<b>S(SM)-UCFLX05-015D1</b>	<b>C(CM)-UCFLX05-015D1</b>									
FLX05D1	<b>S(SM)-UCFLX05-100D1</b>	<b>C(CM)-UCFLX05-100D1</b>									
FLX06D1	<b>S(SM)-UCFLX06D1</b>	<b>C(CM)-UCFLX06D1</b>	8	10	55	59	98.5	47.5	1.5	1.6	1.8
FLX06D1	<b>S(SM)-UCFLX06-101D1</b>	<b>C(CM)-UCFLX06-101D1</b>									
FLX06D1	<b>S(SM)-UCFLX06-102D1</b>	<b>C(CM)-UCFLX06-102D1</b>	$\frac{5}{16}$	$\frac{25}{64}$	$2\frac{5}{32}$	$2\frac{5}{16}$	$3\frac{7}{8}$	$1\frac{7}{8}$	3.3	3.5	4.0
FLX06D1	<b>S(SM)-UCFLX06-103D1</b>	<b>C(CM)-UCFLX06-103D1</b>									
FLX06D1	<b>S(SM)-UCFLX06-104D1</b>	<b>C(CM)-UCFLX06-104D1</b>									
FLX07D1	<b>S(SM)-UCFLX07D1</b>	<b>C(CM)-UCFLX07D1</b>	8	9	62	66	108.5	52.5	1.8	1.9	2.2
FLX07D1	<b>S(SM)-UCFLX07-105D1</b>	<b>C(CM)-UCFLX07-105D1</b>									
FLX07D1	<b>S(SM)-UCFLX07-106D1</b>	<b>C(CM)-UCFLX07-106D1</b>	$\frac{5}{16}$	$\frac{23}{64}$	$2\frac{7}{16}$	$2\frac{19}{32}$	$4\frac{9}{32}$	$2\frac{1}{16}$	4.0	4.2	4.9
FLX07D1	<b>S(SM)-UCFLX07-107D1</b>	<b>C(CM)-UCFLX07-107D1</b>									
FLX08D1	<b>S(SM)-UCFLX08D1</b>	<b>C(CM)-UCFLX08D1</b>	8	12	63	70	114.5	55.5	2.0	2.1	2.4
FLX08D1	<b>S(SM)-UCFLX08-108D1</b>	<b>C(CM)-UCFLX08-108D1</b>									
FLX08D1	<b>S(SM)-UCFLX08-109D1</b>	<b>C(CM)-UCFLX08-109D1</b>	$\frac{5}{16}$	$\frac{15}{32}$	$2\frac{15}{32}$	$2\frac{3}{4}$	$4\frac{1}{2}$	$2\frac{3}{16}$	4.4	4.6	5.3
FLX09D1	<b>S(SM)-UCFLX09D1</b>	<b>C(CM)-UCFLX09D1</b>	7	12	65.5	73	119.5	58	2.2	2.3	2.7
FLX09D1	<b>S(SM)-UCFLX09-110D1</b>	<b>C(CM)-UCFLX09-110D1</b>									
FLX09D1	<b>S(SM)-UCFLX09-111D1</b>	<b>C(CM)-UCFLX09-111D1</b>									
FLX09D1	<b>S(SM)-UCFLX09-112D1</b>	<b>C(CM)-UCFLX09-112D1</b>	$\frac{9}{32}$	$\frac{15}{32}$	$2\frac{19}{32}$	$2\frac{7}{8}$	$4\frac{23}{32}$	$2\frac{9}{32}$	4.9	5.1	6.0
FLX09D1	<b>S(SM)-UCFLX09-113D1</b>	<b>C(CM)-UCFLX09-113D1</b>									
FLX10D1	<b>S(SM)-UCFLX10D1</b>	<b>C(CM)-UCFLX10D1</b>	9	11	71	76	133.5	66.5	3.0	3.2	3.6
FLX10D1	<b>S(SM)-UCFLX10-114D1</b>	<b>C(CM)-UCFLX10-114D1</b>									
FLX10D1	<b>S(SM)-UCFLX10-115D1</b>	<b>C(CM)-UCFLX10-115D1</b>	$\frac{23}{64}$	$\frac{7}{16}$	$2\frac{25}{32}$	3	$5\frac{1}{4}$	$2\frac{5}{8}$	6.6	7.1	7.9
FLX10D1	<b>S(SM)-UCFLX10-200D1</b>	<b>C(CM)-UCFLX10-200D1</b>									