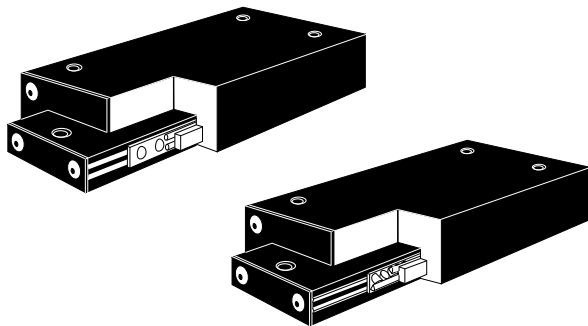


Precision Series

6 Reasons to choose Del-Tron® Precision Series (Ball or Crossed Roller Slides)

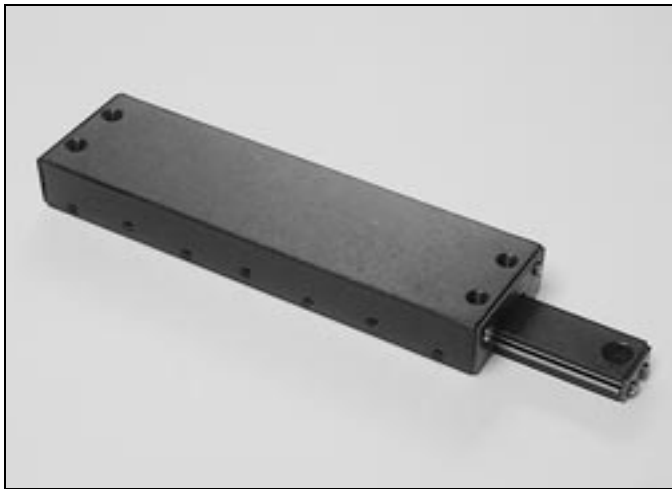


- 1. Corrosion resistant hardened 400 series stainless steel internal components**
- 2. Up to 5" wide cross section.**
- 3. Interchangeable with other manufacturer's products.**
- 4. Low friction straight line design.**
- 5. Adjustable preload.**
- 6. Straight line design with 0.000050" repeatability**

Precision Series (Ball or Crossed Roller Slides)

Del-Tron's Precision Series Ball and Roller Slides offer the designer an aluminum base and carriage with hardened stainless components for superior corrosion resistance and less chance of particulate contamination. Available in standard low profile mounting, the designer can choose a style of bearing and type of rolling element specifically to meet the needs of the most particular applications.

Preload can be adjusted to change the friction and axial play characteristics therefore customizing the slide to its intended use. A new 5-inch wide cross section allows the movement of bulky devices without the necessity of constructing tables with more than one unit.



Precision Series Ball Slides

SPECIFICATIONS:

Straight Line Accuracy

0.0001"/" of travel.

Repeatability

0.000050".

Coefficient of Friction

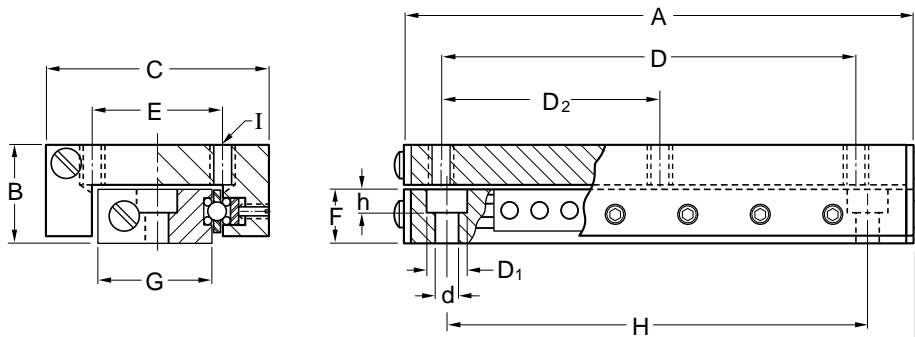
0.002.

Construction

Aluminum carriage and base.
Hardened 400 series stainless steel balls, shafts, pre-load gibs.
Interchangeable with other manufacturers. Economical Ball Slide design.

Finish

Black Anodize. Other finishes on request.



moment load ratings + load / life formulas. pg. 95

*Travel is 1/2 distance from center in either direction.

Model	Travel* (in.)	LOAD CAPACITY		A	B	C	D	d	D ₁	D ₂	E	F	G	H	h	I
		Lbs.	Weight (lbs.)													
M-2SS	1.0	12	0.125	2.56			2.250			-				2.250		
M-3SS	2.0	20	0.175	3.56	.50	1.00	3.250	.125	.198	-	.437	.25	.40	3.250	.125	#6-32
M-4SS	3.0	23	0.225	4.56			4.250			-				4.250		
S2-1SS	1.0	20	0.25	2.00			1.375			-				1.625		
S2-1.5SS	1.5	32	0.34	2.75			2.125			-				2.250		
S2-2SS	2.0	44	0.41	3.25	.75	1.75	2.625	.157	.240	-	.875	.40	.87	2.750	.145	#6-32
S2-3SS	3.0	54	0.50	4.00			3.375			-				3.500		
S2-4SS	4.0	62	0.63	5.00			4.375			-				4.500		
S3-1SS	1.0	35	0.65	2.62			2.125			-				2.125		
S3-2SS	2.0	64	1.00	4.00			3.000			-				3.375		
S3-3SS	3.0	92	1.25	5.00	1.00	2.62	4.000	.204	.328	-	1.250	.61	1.50	4.375	.205	#10-32
S3-4SS	4.0	122	1.50	6.00			5.000			-				5.375		
S3-5SS	5.0	139	1.75	8.00			7.000			-				7.375		
S3-6SS	6.0	154	2.25	9.00			6.000			3.000				7.000		
S5-3SS	3.0	92	2.25	5.00			4.000			2.000				4.000		
S5-5SS	5.0	142	3.25	7.00	1.00	5.00	6.000	.281	.412	3.000	4.000	.61	3.87	6.000	.280	1/4-20
S5-7SS	7.0	170	4.25	9.00			8.000			4.000				8.000		