

Support Unit



BK / EK / AK / FK
BF / EF / AF / FF
RN / Color



Support Unit

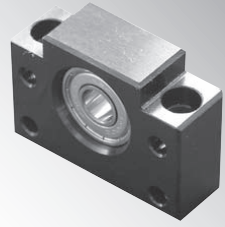
고정측 *Fixed side*

지지측 *Support side*

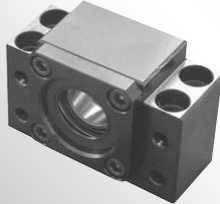
BK Block Type



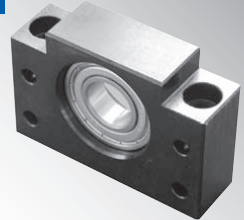
BF Block Type



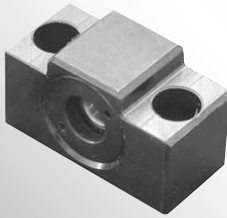
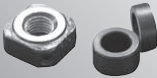
EK Block Type



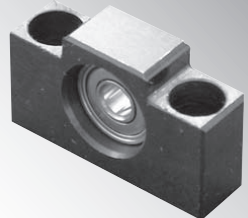
EF Block Type



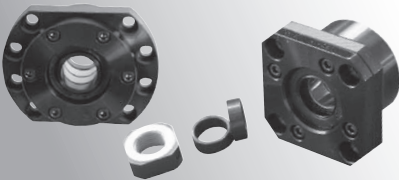
AK Block Type



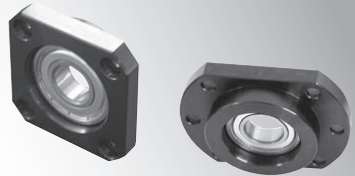
AK Block Type



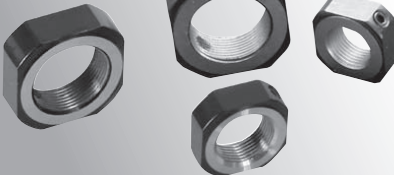
FK Block Type



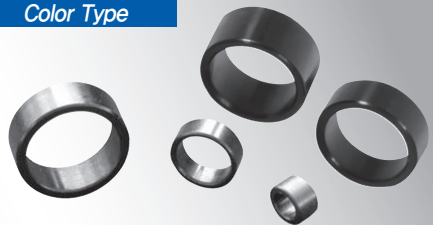
FF Block Type



Lock nut



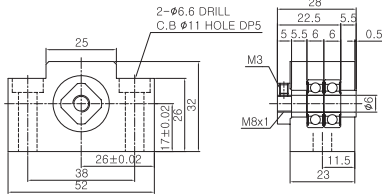
Color Type



Ø6

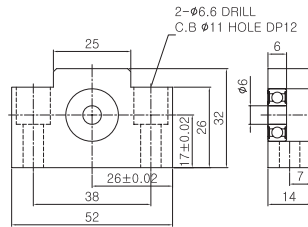
BK6

BK6 Composion List		
부품명 Part Name	호칭 Model	수량 Q'ty
하우징 Housing	BK6	1
베어링 Bearing	606ZZ	1SET
칼 라 Color	C6-5.5	2
방진씰 Dust proof seal	#6	1
로코너트 Lock Nut	RN6	1
로코너트용 세트나사 Set screw for Lock Nut	M3×0.5	1
고정밀급 베어링 교체 가능 High accuracy bearing changable		



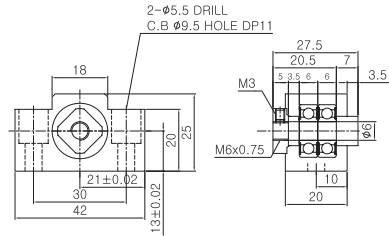
BF6

BF6 Composion List		
부품명 Part Name	호칭 Model	수량 Q'ty
하우징 Housing	BF6	1
베어링 Bearing	606ZZ	1
스냅링 Snap ring	Ø6	1



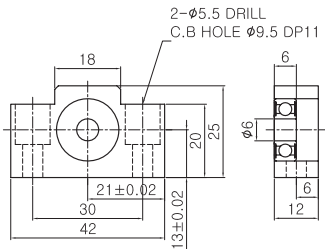
EK6

EK6 Composion List		
부품명 Part Name	호칭 Model	수량 Q'ty
하우징 Housing	EK6	1
베어링 Bearing	606ZZ	1SET
칼 라 Color	C6-3.5 C6-7	1 1
방진씰 Dust proof seal	#6	1
로코너트 Lock Nut	RN6	1
로코너트용 세트나사 Set screw for Lock Nut	M3×0.5	1
고정밀급 베어링 교체 가능 High accuracy bearing changable		



EF6

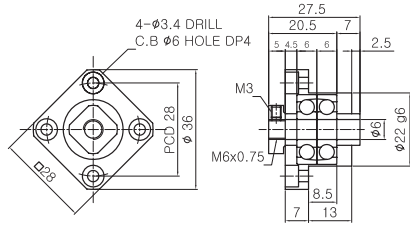
EF6 Composion List		
부품명 Part Name	호칭 Model	수량 Q'ty
하우징 Housing	EF6	1
베어링 Bearing	606ZZ	1
스냅링 Snap ring	Ø6	1



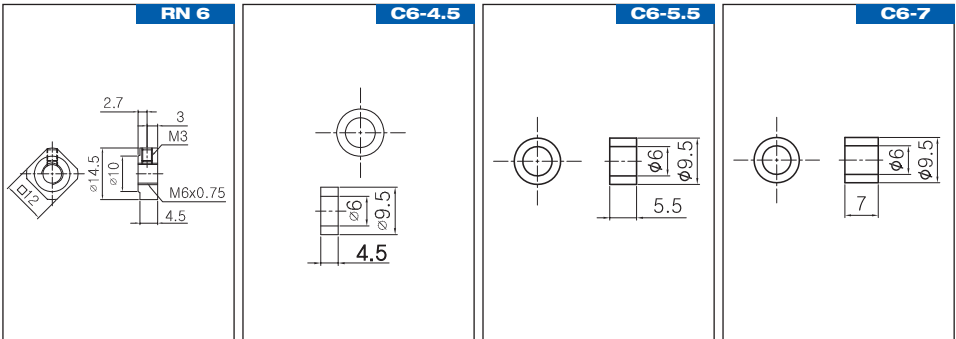
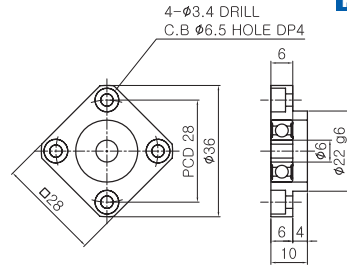
H

Support Unit

FK6 Composition List		
부품명 Part Name	호칭 Model	수량 Q'ty
하우징 Housing	FK6	1
베어링 Bearing	606ZZ	1SET
컬 라 Color	C6-4.5 C6-7	1 1
방진씰 Dust proof seal	#6	1
로코너트 Lock Nut	RN6	1
로코너트용 세트나사 Set screw for Lock Nut	M3×0.5	1
고정밀급 베어링 교체 가능 High accuracy bearing changable		

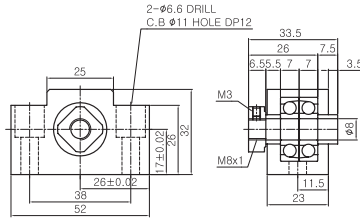


FF6 Composition List		
부품명 Part Name	호칭 Model	수량 Q'ty
하우징 Housing	FF6	1
베어링 Bearing	606ZZ	1
스냅링 Snap ring	Ø6	1



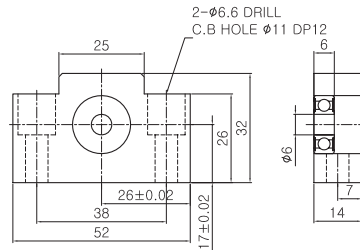
BK8 Composition List

부품명 Part Name	호칭 Model	수량 Qty
하우징 Housing	BK8	1
베어링 Bearing	EN8	1SET
칼 라 Color	C8-5.5 C8-7.5	1 1
방진씰 Dust proof seal	#8	1
로코너트 Lock Nut	RN8	1
로코너트용 세트나사 Set screw for Lock Nut	M3×0.5	1
고정밀급 베어링 교체 가능 High accuracy bearing changable		



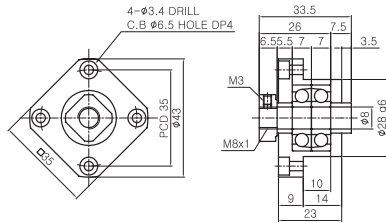
BF8 Composition List

부품명 Part Name	호칭 Model	수량 Qty
하우징 Housing	BF8	1
베어링 Bearing	606ZZ	1
스냅링 Snap ring	Ø6	1



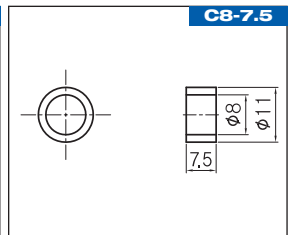
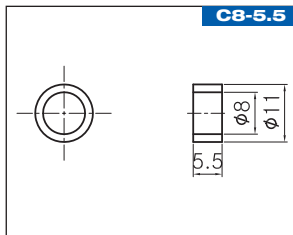
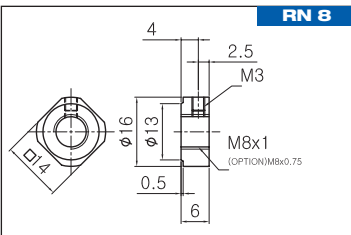
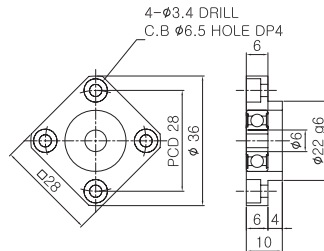
FK8 Composition List

부품명 Part Name	호칭 Model	수량 Qty
하우징 Housing	FK8	1
베어링 Bearing	EN8	1SET
칼 라 Color	C8-5.5 C8-7.5	1 1
방진씰 Dust proof seal	#8	1
로코너트 Lock Nut	RN8	1
로코너트용 세트나사 Set screw for Lock Nut	M3×0.5	1
고정밀급 베어링 교체 가능 High accuracy bearing changable		



FF8 Composition List

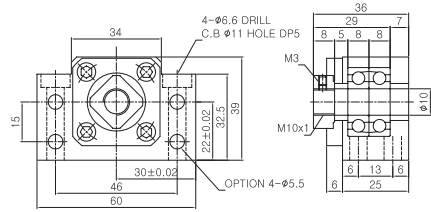
부품명 Part Name	호칭 Model	수량 Qty
하우징 Housing	FF8	1
베어링 Bearing	606ZZ	1
스냅링 Snap ring	Ø6	1



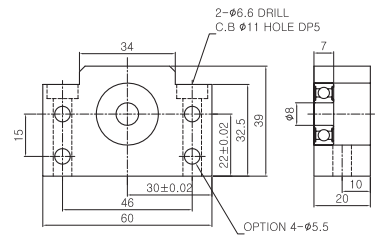
Ø10

BK10

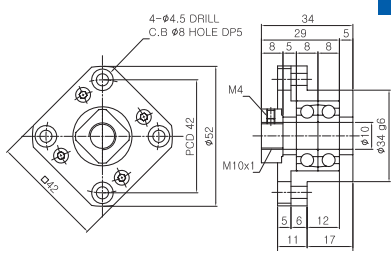
BK10 Composition List		
부품명 Part Name	호칭 Model	수량 Q'ty
하우징 Housing	BK10	1
베어링 Bearing	7000ADFC7	1SET
컬 라 Color	C10-5 C10-7	1 1
방진셀 Dust proof seal	#10	2
로코너트 Lock Nut	RN10	1
로코너트용 세트나사 Set screw for Lock Nut	M4×0.7	1
고정밀급 베어링 교체 가능 High accuracy bearing changable		



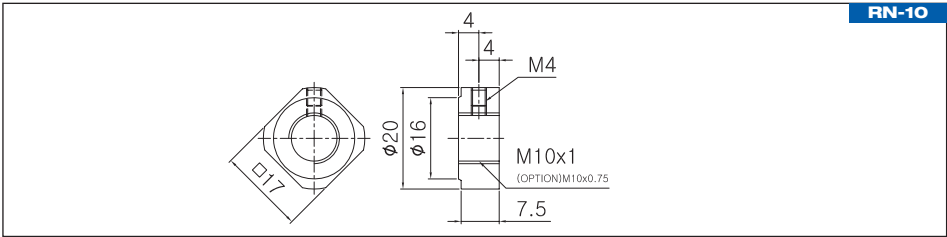
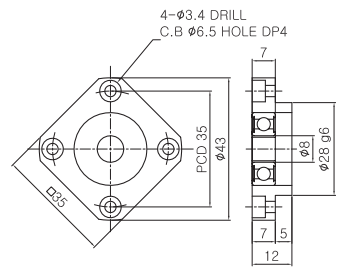
BF10 Composition List		
부품명 Part Name	호칭 Model	수량 Q'ty
하우징 Housing	BF10	1
베어링 Bearing	608ZZ	1
스냅링 Snap ring	Ø8	1



FK10 Composition List		
부품명 Part Name	호칭 Model	수량 Q'ty
하우징 Housing	FK10	1
베어링 Bearing	7000ADFC7	1SET
컬 라 Color	C10-5	2
방진셀 Dust proof seal	#10	2
로코너트 Lock Nut	RN10	1
로코너트용 세트나사 Set screw for Lock Nut	M4×0.7	1
고정밀급 베어링 교체 가능 High accuracy bearing changable		



FF10 Composition List		
부품명 Part Name	호칭 Model	수량 Q'ty
하우징 Housing	FF10	1
베어링 Bearing	608ZZ	1
스냅링 Snap ring	Ø8	1

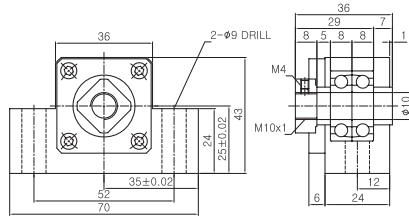


RN-10

Ø10

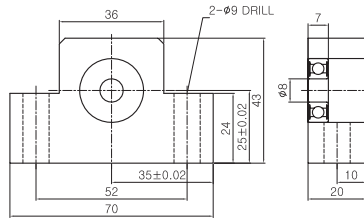
EK10

EK10 Composition List		
부품명 Part Name	호칭 Model	수량 Qty
하우징 Housing	EK10	1
베어링 Bearing	7000ADFC7	1SET
칼 라 Color	C10-5 C10-7	1 1
방진씰 Dust proof seal	#10	2
로코너트 Lock Nut	RN10	1
로코너트용 세트나사 Set screw for Lock Nut	M4x0,7	1
고정밀급 베어링 교체 가능 High accuracy bearing changable		



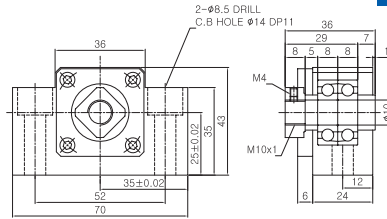
EF10

EF10 Composition List		
부품명 Part Name	호칭 Model	수량 Qty
하우징 Housing	EF10	1
베어링 Bearing	608ZZ	1
스냅링 Snap ring	Ø8	1



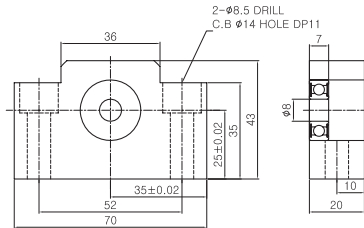
AK10

AK10 Composition List		
부품명 Part Name	호칭 Model	수량 Qty
하우징 Housing	AK10	1
베어링 Bearing	7000ADFC7	1SET
칼 라 Color	C10-5 C10-7	1 1
방진씰 Dust proof seal	#10	2
로코너트 Lock Nut	RN10	1
로코너트용 세트나사 Set screw for Lock Nut	M4x0,7	1
고정밀급 베어링 교체 가능 High accuracy bearing changable		

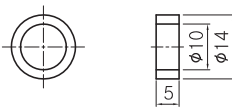


AF10

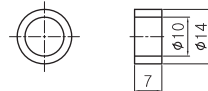
AF10 Composition List		
부품명 Part Name	호칭 Model	수량 Qty
하우징 Housing	AF10	1
베어링 Bearing	608ZZ	1
스냅링 Snap ring	Ø8	1



C10-5



C10-7



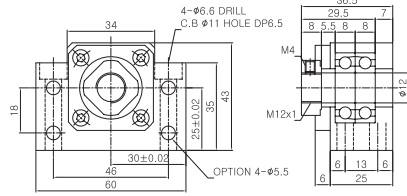
H

Support Unit

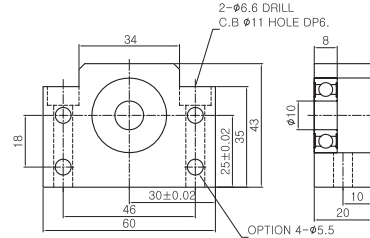
Ø12

BK12

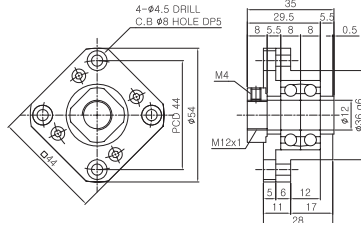
BK12 Composition List		
부품명 Part Name	호칭 Model	수량 Q'ty
하우징 Housing	BK12	1
베어링 Bearing	7001ADFC7	1SET
컬 라 Color	C12-5.5 C12-7	1 1
방진셀 Dust proof seal	#12	2
로코너트 Lock Nut	RN12	1
로코너트용 세트나사 Set screw for Lock Nut	M4×0.7	1
고정밀급 베어링 교체 가능 High accuracy bearing changable		



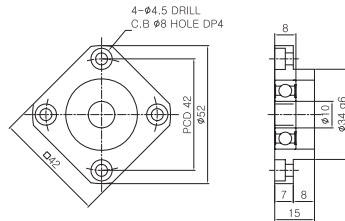
BF12 Composition List		
부품명 Part Name	호칭 Model	수량 Q'ty
하우징 Housing	BF12	1
베어링 Bearing	6000ZZ	1
스냅링 Snap ring	Ø10	1



FK12 Composition List		
부품명 Part Name	호칭 Model	수량 Q'ty
하우징 Housing	FK12	1
베어링 Bearing	7001ADFC7	1SET
컬 라 Color	C12-5.5	2
방진셀 Dust proof seal	#12	2
로코너트 Lock Nut	RN12	1
로코너트용 세트나사 Set screw for Lock Nut	M4×0.7	1
고정밀급 베어링 교체 가능 High accuracy bearing changable		



FF12 Composition List		
부품명 Part Name	호칭 Model	수량 Q'ty
하우징 Housing	FF12	1
베어링 Bearing	6000ZZ	1
스냅링 Snap ring	Ø10	1



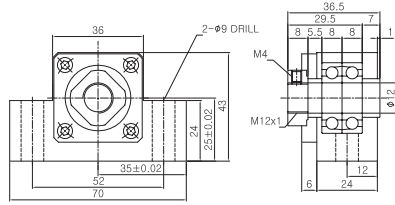
RN-12		
<p>Technical drawing of RN-12 lock nut. Front view shows a diamond-shaped nut with dimensions: 4.5 (width), 3.5 (height), 18 (inner diameter), and 22 (outer diameter). Side view shows a lock nut with dimensions: 7.5 (width), 18 (height), 10 (inner diameter), and 15 (outer diameter).</p>		

Support Unit

Ø12

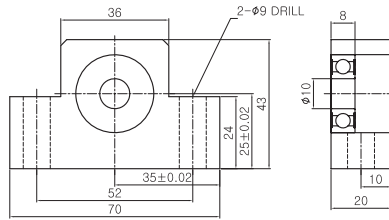
EK12

EK12 Composition List		
부품명 Part Name	호칭 Model	수량 Qty
하우징 Housing	EK12	1
베어링 Bearing	7001ADFC7	1SET
칼 라 Color	C12-5.5 C12-7	1 1
방진셀 Dust proof seal	#12	2
로코너트 Lock Nut	RN12	1
로코너트용 세트나사 Set screw for Lock Nut	M4×0,7	1
고정밀급 베어링 교체 가능 High accuracy bearing changable		



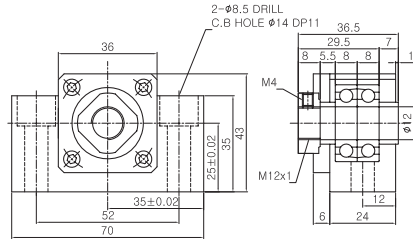
EF12

EF12 Composition List		
부품명 Part Name	호칭 Model	수량 Qty
하우징 Housing	EF12	1
베어링 Bearing	6000ZZ	1
스냅링 Snap ring	Ø10	1



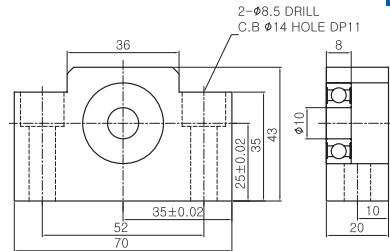
AK12

AK12 Composition List		
부품명 Part Name	호칭 Model	수량 Qty
하우징 Housing	AK12	1
베어링 Bearing	7001ADFC7	1SET
칼 라 Color	C12-5.5 C12-7	1 1
방진셀 Dust proof seal	#12	2
로코너트 Lock Nut	RN12	1
로코너트용 세트나사 Set screw for Lock Nut	M4×0,7	1
고정밀급 베어링 교체 가능 High accuracy bearing changable		

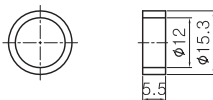


AF12

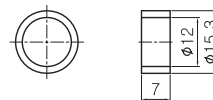
AF12 Composition List		
부품명 Part Name	호칭 Model	수량 Qty
하우징 Housing	AF12	1
베어링 Bearing	6000ZZ	1
스냅링 Snap ring	Ø10	1



C12-5.5



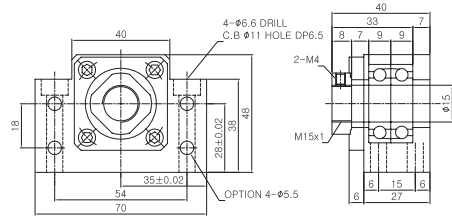
C12-7



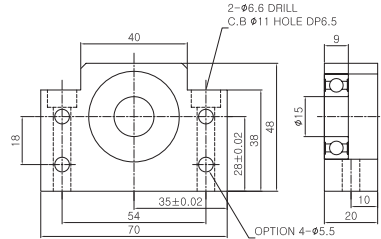
Ø15

BK15

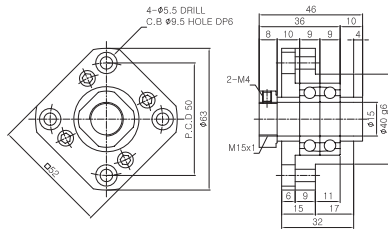
BK15 Composition List		
부품명 Part Name	호칭 Model	수량 Q'ty
하우징 Housing	BK15	1
베어링 Bearing	7002ADFC7	1SET
칼 라 Color	C15-7	2
방진셀 Dust proof seal	#15	2
로코너트 Lock Nut	RN15	1
로코너트용 세트나사 Set screw for Lock Nut	M4×0.7	2
고정밀급 베어링 교체 가능 High accuracy bearing changable		



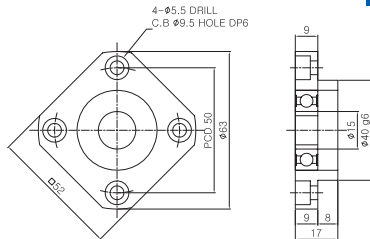
BF15 Composition List		
부품명 Part Name	호칭 Model	수량 Q'ty
하우징 Housing	BF15	1
베어링 Bearing	6002ZZ	1
스냅링 Snap ring	Ø15	1



FK15 Composition List		
부품명 Part Name	호칭 Model	수량 Q'ty
하우징 Housing	FK15	1
베어링 Bearing	7002ADFC7	1SET
칼 라 Color	C15-10	2
방진셀 Dust proof seal	#15	2
로코너트 Lock Nut	RN15	1
로코너트용 세트나사 Set screw for Lock Nut	M4×0.7	2
고정밀급 베어링 교체 가능 High accuracy bearing changable		



FF15 Composition List		
부품명 Part Name	호칭 Model	수량 Q'ty
하우징 Housing	FF15	1
베어링 Bearing	6002ZZ	1
스냅링 Snap ring	Ø15	1

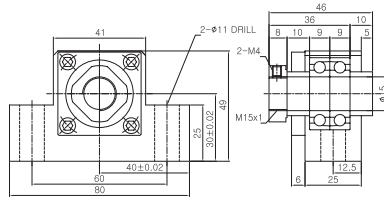


RN-15		
<p>Technical drawing of RN-15 lock nut. Front view shows a square lock nut with a central bore. Dimensions include 4.5 (width), 3.5 (height), 21 (inner width), 25 (outer width), and 7.5 (total length). Callouts include Ø25, Ø21, and M15x1. Side view shows a lock nut with a height of 3.5 and a diameter of Ø15. A set screw is shown with a diameter of M4 and a length of 0.7.</p>		

Ø15

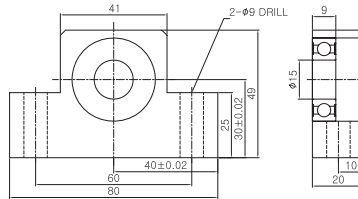
EK15

EK15 Composition List		
부품명 Part Name	호칭 Model	수량 Qty
하우징 Housing	EK15	1
베어링 Bearing	7002ADFC7	1SET
칼 라 Color	C15-10	2
방진씰 Dust proof seal	#15	2
로코너트 Lock Nut	RN15	1
로코너트용 세트나사 Set screw for Lock Nut	M4×0,7	2
고정밀급 베어링 교체 가능 High accuracy bearing changable		



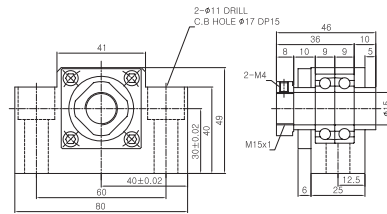
EF15

EF15 Composition List		
부품명 Part Name	호칭 Model	수량 Qty
하우징 Housing	EF15	1
베어링 Bearing	6002ZZ	1
스냅링 Snap ring	Ø15	1



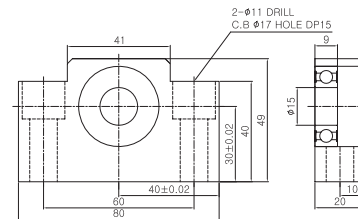
AK15

AK15 Composition List		
부품명 Part Name	호칭 Model	수량 Qty
하우징 Housing	AK15	1
베어링 Bearing	7002ADFC7	1SET
칼 라 Color	C15-10	2
방진씰 Dust proof seal	#15	2
로코너트 Lock Nut	RN15	1
로코너트용 세트나사 Set screw for Lock Nut	M4×0,7	2
고정밀급 베어링 교체 가능 High accuracy bearing changable		

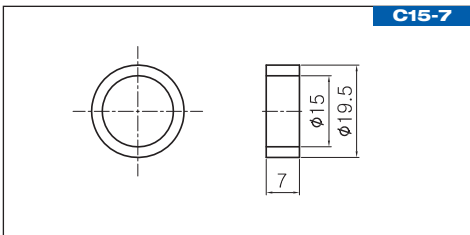


AF15

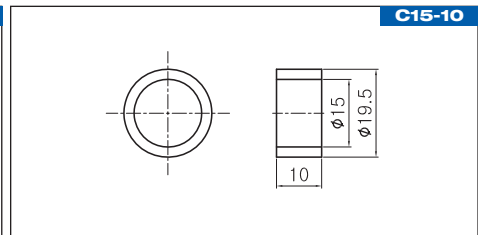
AF15 Composition List		
부품명 Part Name	호칭 Model	수량 Qty
하우징 Housing	AF15	1
베어링 Bearing	6002ZZ	1
스냅링 Snap ring	Ø15	1



C15-7



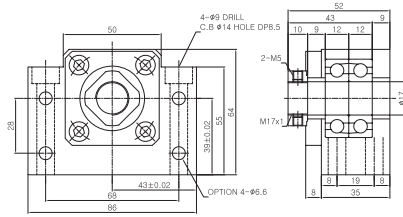
C15-10



Ø17

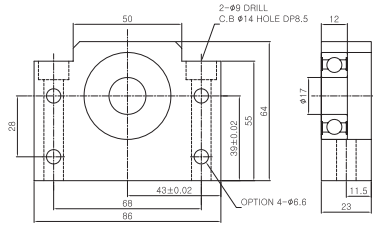
BK17

BK17 Composition List		
부품명 Part Name	호칭 Model	수량 Q'ty
하우징 Housing	BK17	1
베어링 Bearing	7203BDFC7	1SET
컬 라 Color	C17-9	2
방진셀 Dust proof seal	#17	2
로코너트 Lock Nut	RN17	1
로코너트용 세트나사 Set screw for Lock Nut	M5×0.8	2
고정밀급 베어링 교체 가능 High accuracy bearing changable		



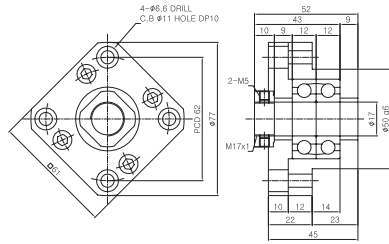
BF17

BF17 Composition List		
부품명 Part Name	호칭 Model	수량 Q'ty
하우징 Housing	BF17	1
베어링 Bearing	6203ZZ	1
스냅링 Snap ring	Ø17	1



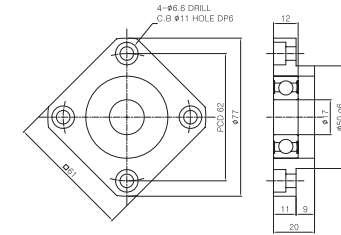
FK17

FK17 Composition List		
부품명 Part Name	호칭 Model	수량 Q'ty
하우징 Housing	FK17	1
베어링 Bearing	7203BDFC7	1SET
컬 라 Color	C17-9	2
방진셀 Dust proof seal	#17	2
로코너트 Lock Nut	RN17	1
로코너트용 세트나사 Set screw for Lock Nut	M5×0.8	2
고정밀급 베어링 교체 가능 High accuracy bearing changable		

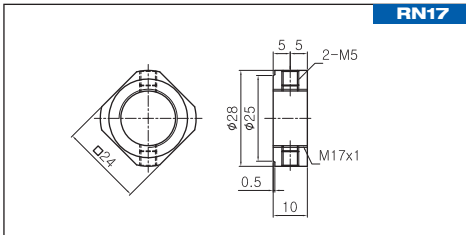


FF17

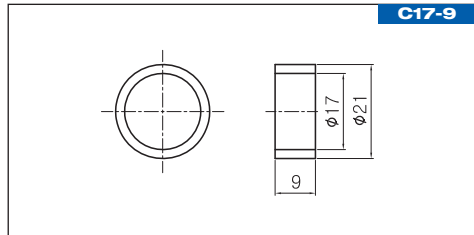
FF17 Composition List		
부품명 Part Name	호칭 Model	수량 Q'ty
하우징 Housing	FF17	1
베어링 Bearing	6203ZZ	1
스냅링 Snap ring	Ø17	1



RN17



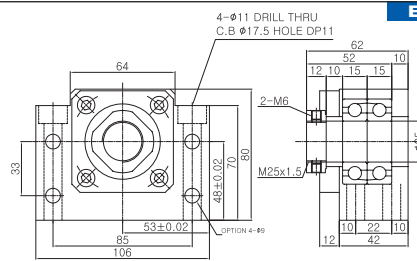
C17-9



Ø25

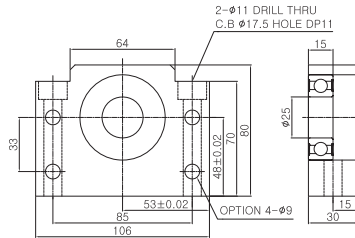
BK25

BK25 Composion List		
부품명 Part Name	호칭 Model	수량 Qty
하우징 Housing	BK25	1
베어링 Bearing	7205BDFC7	1SET
칼 라 Color	C25-10	2
방진씰 Dust proof seal	#25	2
로코너트 Lock Nut	RN25	1
로코너트용 세트나사 Set screw for Lock Nut	M6×1	2
고정밀급 베어링 교체 가능 High accuracy bearing changable		



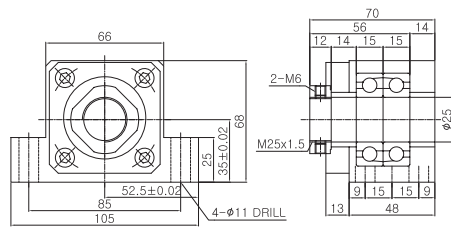
BF25

BF25 Composion List		
부품명 Part Name	호칭 Model	수량 Qty
하우징 Housing	BF25	1
베어링 Bearing	6205ZZ	1
스냅링 Snap ring	Ø25	1



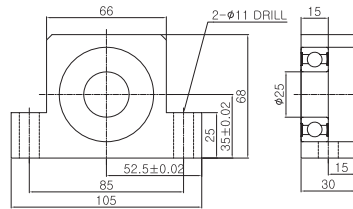
EK25

EK25 Composion List		
부품명 Part Name	호칭 Model	수량 Qty
하우징 Housing	EK25	1
베어링 Bearing	7205BDFC7	1SET
칼 라 Color	C25-14	2
방진씰 Dust proof seal	#25	2
로코너트 Lock Nut	RN25	1
로코너트용 세트나사 Set screw for Lock Nut	M6×1	2
고정밀급 베어링 교체 가능 High accuracy bearing changable		

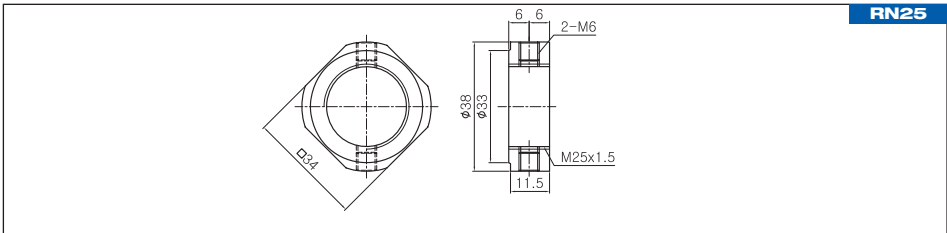


EF25

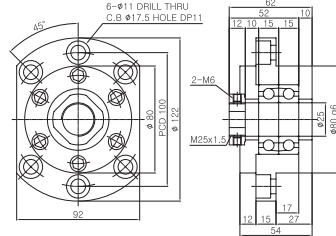
EF25 Composion List		
부품명 Part Name	호칭 Model	수량 Qty
하우징 Housing	EF25	1
베어링 Bearing	6205ZZ	1
스냅링 Snap ring	Ø25	1



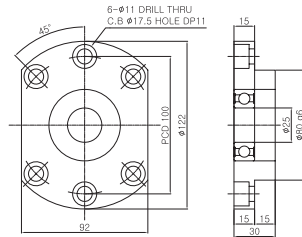
RN25



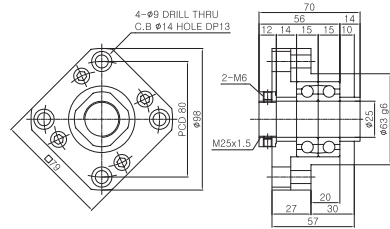
FK25 Composion List		
부품명 Part Name	호칭 Model	수량 Q'ty
하우징 Housing	FK25	1
베어링 Bearing	7205BDFC7	1SET
칼 라 Color	C25-10	2
방진셀 Dust proof seal	#25	2
로코너트 Lock Nut	RN25	1
로코너트용 세트나사 Set screw for Lock Nut	M6×1	2
고정밀급 베어링 교체 가능 High accuracy bearing changable		



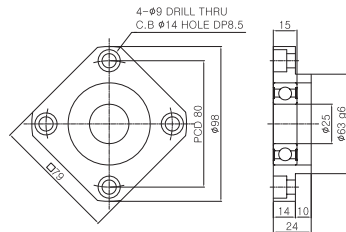
FF25 Composion List		
부품명 Part Name	호칭 Model	수량 Q'ty
하우징 Housing	FF25	1
베어링 Bearing	6205ZZ	1
스냅링 Snap ring	Ø25	1



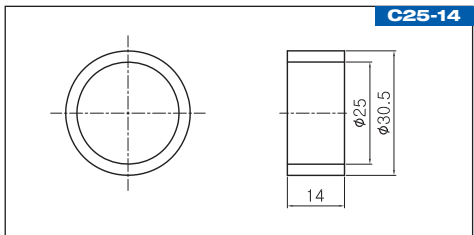
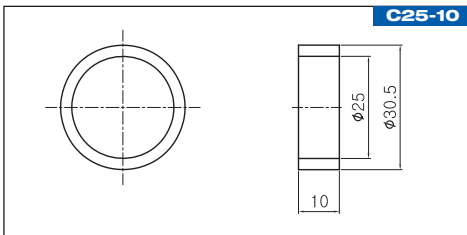
FK25T Composion List		
부품명 Part Name	호칭 Model	수량 Q'ty
하우징 Housing	FK25T	1
베어링 Bearing	7205BDFC7	1SET
칼 라 Color	C25-14	2
방진셀 Dust proof seal	#25	2
로코너트 Lock Nut	RN25	1
로코너트용 세트나사 Set screw for Lock Nut	M6×1	2
고정밀급 베어링 교체 가능 High accuracy bearing changable		



FF25T Composion List		
부품명 Part Name	호칭 Model	수량 Q'ty
하우징 Housing	FF25T	1
베어링 Bearing	6205ZZ	1
스냅링 Snap ring	Ø25	1



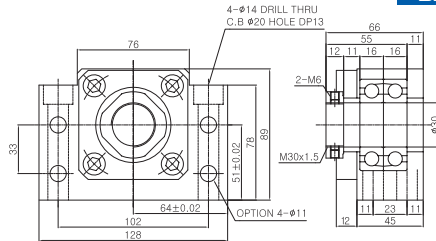
Support Unit



Ø30

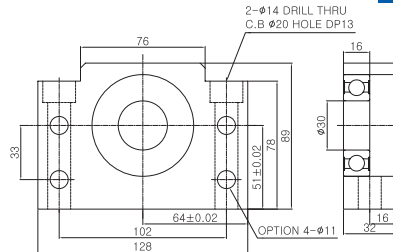
BK30

BK30 Composition List		
부품명 Part Name	호칭 Model	수량 Qty
하우징 Housing	BK30	1
베어링 Bearing	7206BDFC7	1SET
칼 라 Color	C30-11	2
방진씰 Dust proof seal	#30	2
로코너트 Lock Nut	RN30	1
로코너트용 세트나사 Set screw for Lock Nut	M6×1	2
고정밀급 베어링 교체 가능 High accuracy bearing changable		



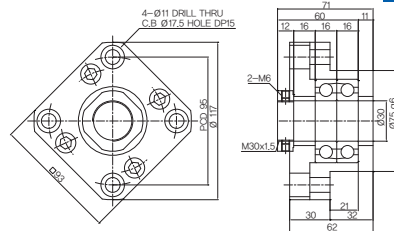
BF30

BF30 Composition List		
부품명 Part Name	호칭 Model	수량 Qty
하우징 Housing	BF30	1
베어링 Bearing	6206ZZ	1
스냅링 Snap ring	Ø30	1



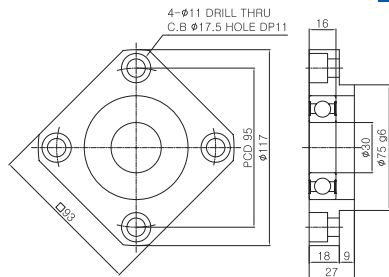
FK30T

FK30T Composition List		
부품명 Part Name	호칭 Model	수량 Qty
하우징 Housing	FK30T	1
베어링 Bearing	7206BDFC7	1SET
칼 라 Color	C30-11	2
방진씰 Dust proof seal	#30	2
로코너트 Lock Nut	RN30	1
로코너트용 세트나사 Set screw for Lock Nut	M6×1	2
고정밀급 베어링 교체 가능 High accuracy bearing changable		



FF30T

FF30T Composition List		
부품명 Part Name	호칭 Model	수량 Qty
하우징 Housing	FF30T	1
베어링 Bearing	6206ZZ	1
스냅링 Snap ring	Ø30	1



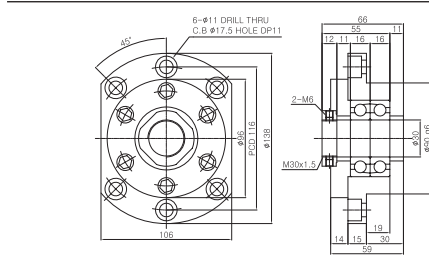
H

Support Unit

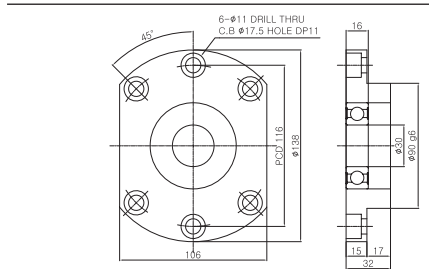
Ø30

FK30

FK30 Composition List		
부품명 Part Name	호칭 Model	수량 Q'ty
하우징 Housing	FK30	1
베어링 Bearing	7206BDFC7	1SET
컬 라 Color	C30-11	2
방진셀 Dust proof seal	#30	1
로코너트 Lock Nut	RN30	1
로코너트용 세트나사 Set screw for Lock Nut	M6×1	1
고정밀급 베어링 교체 가능 High accuracy bearing changable		



FF30 Composition List		
부품명 Part Name	호칭 Model	수량 Q'ty
하우징 Housing	FF30	1
베어링 Bearing	6206ZZ	1
스냅링 Snap ring	Ø30	1



FF30

H
Support Unit

